

# ALGONA CAMPUS

Please watch our WEB SITE for updates: [www.iowalakes.edu](http://www.iowalakes.edu) ♦Denoted courses appear in cumulative credit totals but do not count toward graduation requirements.

Synonym	Course/Section	Title	Credit	Start Time	End Time	Days	Room	Course types	Last Name	Start Date	End Date
<b>ACCOUNTING</b>											
0008619	ACC-131-13	Principles of Accounting I	4.00				7	S CTR	McNeill	1/9/2007	5/11/2007
0009247	ACC-131-30	Principles of Accounting I	4.00	06:00PM	10:00PM	M	9		Evers	1/9/2007	5/11/2007
0008497	ACC-132-203	Principles of Accounting II	4.00	08:30AM	09:55AM	M W	12	ILTV	Berven	1/9/2007	5/11/2007
				09:00AM	09:55AM	F	12	ILTV	Berven	1/9/2007	5/11/2007
0008502	ACC-232-203	Intermediate Accounting II	4.00	12:00PM	12:55PM	F	12	HYBRD ILTV	Berven	1/9/2007	5/11/2007
				09:00AM	09:55AM	T R	12	HYBRD ILTV	Berven	1/9/2007	5/11/2007
0009062	ACC-261-203	Income Tax Accounting	3.00	02:00PM	03:25PM	T R	11	ILTV	Grimm	1/9/2007	5/11/2007
<b>ADMINISTRATIVE ASSISTANT</b>											
0008622	ADM-106-13	Introduction to Keyboarding	2.00				7	S CTR	McNeill	1/9/2007	5/11/2007
<b>ANTHROPOLOGY</b>											
0008051	ANT-105-73	Cultural Anthropology	3.00					CBCIP	Tigges	1/9/2007	5/11/2007
<b>ART</b>											
0008752	ART-101-203	Art Appreciation	3.00	10:00AM	11:25AM	T R	12	ILTV	Lindell	1/9/2007	5/11/2007
0008066	ART-206-73	Art History	3.00					CBCIP	Kattner	1/9/2007	5/11/2007
<b>ASSOCIATE DEGREE NURSING</b>											
0009176	ADN-501-203	Nursing Interv/Adult Health I	7.00	06:00PM	10:00PM	M W	11	ILTV	Oppenheimer	1/8/2007	5/9/2007
0009179	ADN-502-100	Nursing Interv/Adult Health I Clinical	2.00	06:30AM	02:30PM	S SU			Staff	1/24/2007	5/6/2007
<b>BIOLOGY</b>											
0009740	BIO-105-30	Introductory Biology	4.00	05:00PM	10:00PM	R	21		Funnemark	1/9/2007	5/11/2007
0009024	BIO-169-30	Human Anatomy & PhysioloGy I	4.00	05:00PM	10:00PM	W			Bristow	1/9/2007	5/11/2007
0009246	BIO-174-30	Human Anatomy & Physiology II	4.00	05:00PM	10:00PM	M	21		Wehrspan	1/9/2007	5/11/2007
<b>BUSINESS</b>											
0008510	BUS-115-203	Business Correspondence	2.00	01:00PM	01:55PM	F	11	HYBRD ILTV	Berven	1/9/2007	5/11/2007
0009082	BUS-211-203	Business Statistics	4.00	06:00PM	10:00PM	R	11	ILTV	Burrow	1/9/2007	5/11/2007
<b>CHEMISTRY</b>											
0009133	CHM-151-203	College Chemistry I	4.00	04:30PM	05:55PM	T R	12	ILTV	Torney	1/9/2007	5/11/2007
				6:15PM	8:15PM	W			Munson		
<b>COMPUTER SCIENCE</b>											
0008880	CSC-101-100	*Computer Familiarization	1.00	05:00PM	09:00PM	T W R			Herbst-Ulmer	12/21/2006	1/4/2007
0009244	CSC-110-30	Introduction to Computers	3.00	04:30PM	05:55PM	T R	17		Herbst-Ulmer	1/9/2007	5/11/2007
		*Fast Track: 12/21, 1/2, 3, 4									
<b>ECONOMICS</b>											
0008463	ECN-120-203	Principles of Macroeconomics	3.00	10:00AM	10:55AM	M W F	11	ILTV	Wimmer	1/9/2007	5/11/2007
0009129	ECN-120-213	Principles of Macroeconomics	3.00	06:00PM	09:00PM	R	12	ILTV	Wimmer	1/9/2007	5/11/2007
0008469	ECN-130-203	Principles of Microeconomics	3.00	10:00AM	11:25AM	T R	11	ILTV	Wimmer	1/9/2007	5/11/2007
<b>EDUCATION</b>											
0008591	EDU-215-203	*Introduction to Education	3.00	03:00PM	04:25PM	T R	12	ILTV	Ver Mulm	1/9/2007	5/11/2007
0008600	EDU-217-100	**Introduction to Education	1.00						Ver Mulm	1/9/2007	5/11/2007
0008783	EDU-235-203	Children's Literature	3.00	12:00PM	12:55PM	M W F	12	ILTV	Barr/Bunt	1/9/2007	5/11/2007
		*Must take EDU-217 Introduction to Education Lab									
		**Students must register for EDU-215 Introduction to Education									
<b>ENGLISH COMPOSITION</b>											
0008627	ENG-012-13	♦Basic Writing	2.00				7	S CTR	McNeill	1/9/2007	5/11/2007
0008626	ENG-028-13	♦Writing Strategies	2.00				7	S CTR	McNeill	1/9/2007	5/11/2007
0008628	ENG-062-13	♦Introduction to College Writing	2.00				7	S CTR	McNeill	1/9/2007	5/11/2007
0008804	ENG-105-203	Composition I	3.00	01:00PM	01:55PM	M W	11	HYBRD ILTV	Naber	1/9/2007	5/11/2007
0009249	ENG-105-30	Composition I	3.00	06:00PM	09:00PM	W	9		Staff	1/9/2007	5/11/2007
0008809	ENG-106-203	Composition II	3.00	02:00PM	02:55PM	M W	11	HYBRD ILTV	Naber	1/9/2007	5/11/2007
0008819	ENG-106-213	Composition II	3.00	07:30AM	08:55AM	T R	12	HYBRD ILTV	Naber	1/9/2007	5/11/2007
0009067	ENG-106-223	Composition II	3.00	04:30PM	05:55PM	M W	11	ILTV	Staff	1/9/2007	5/11/2007
0009073	ENG-106-233	Composition II	3.00	06:00PM	09:00PM	T	11	ILTV	Staff	1/9/2007	5/11/2007
0008814	ENG-106-53	Composition II	3.00	07:30AM	08:25AM	M W F	13	ICN	Naber	1/9/2007	5/11/2007
<b>FOREIGN LANGUAGE - SPANISH</b>											
0008943	FLS-142-203	Elementary Spanish II	4.00	02:00PM	02:55PM	M T W R	12	ILTV	Nichols	1/9/2007	5/11/2007
0010037	FLS-142-53	Elementary Spanish II	4.00	06:00PM	07:55PM	T R	ICN	High School	Nichols	1/9/2007	5/11/2007
<b>GEOGRAPHY</b>											
0008640	GEO-121-13	World Regional Geography	3.00				7	S CTR	McNeill	1/9/2007	5/11/2007

0009097	GEO-121-203	World Regional Geography	3.00	11:30AM	12:25PM	T R	12	HYBRD ILTV	Hackenmiller	1/9/2007	5/11/2007
0008106	GEO-121-73	World Regional Geography	3.00					CBCIP	Hackenmiller	1/9/2007	5/11/2007

## ALGONA CAMPUS

Please watch our WEB SITE for updates: [www.iowalakes.edu](http://www.iowalakes.edu) ♦ Denoted courses appear in cumulative credit totals but do not count toward graduation requirements.

Synonym	Course/Section	Title	Credit	Start Time	End Time	Days	Room	Course types	Last Name	Start Date	End Date
<b>HISTORY</b>											
0008537	HIS-111-203	Western Civ: Modern to Present	3.00	09:00AM	09:55AM	M W F	11	ILTV	Hackenmiller	1/9/2007	5/11/2007
0008639	HIS-151-13	American History to 1877	3.00				7	S CTR	McNeill	1/9/2007	5/11/2007
0008061	HIS-151-73	American History to 1877	3.00					CBCIP	Bomgaars	1/9/2007	5/11/2007
0008111	HIS-152-73	American History Since 1877	3.00					CBCIP	Bomgaars	1/9/2007	5/11/2007
0008623	HSC-114-13	Medical Terminology	3.00				7	S CTR	McNeill	1/9/2007	5/11/2007
<b>LITERATURE</b>											
0008086	LIT-101-73	Introduction to Literature	3.00					CBCIP	Devereaux	1/9/2007	5/11/2007
0008631	LIT-111-13	American Literature Since Mid-1800's	3.00				7	S CTR	McNeill	1/9/2007	5/11/2007
0008796	LIT-111-203	American Literature Since Mid-1800's	3.00	11:00AM	11:55AM	M W F	11	ILTV	Schoenewe	1/9/2007	5/11/2007
0008071	LIT-124-73	American Poetry	3.00					CBCIP	Devereaux	1/9/2007	5/11/2007
<b>MATHEMATICS</b>											
0008632	MAT-005-13	♦Math Refresher	1.00				7	S CTR	McNeill	1/9/2007	5/11/2007
0008634	MAT-015-13	♦Metric System	1.00				7	S CTR	McNeill	1/9/2007	5/11/2007
0008633	MAT-050-13	♦Math Improvement	1.00				7	S CTR	McNeill	1/9/2007	5/11/2007
0008635	MAT-100-13	Elementary Algebra	3.00				7	S CTR	McNeill	1/9/2007	5/11/2007
0009102	MAT-101-203	Intermediate Algebra	3.00	12:30PM	01:55PM	T R	12	ILTV	Schendel	1/9/2007	5/11/2007
0008836	MAT-110-203	Math for Liberal Arts	3.00	08:30AM	09:55AM	T R	11	ILTV	Schendel	1/9/2007	5/11/2007
0009245	MAT-110-30	Math for Liberal Arts	3.00	04:30PM	05:55PM	M W	9		Staff	1/9/2007	5/11/2007
0008248	MAT-127-203	College Algebra & Trigonometry	5.00	01:00PM	01:55PM	M T W R F	11	ILTV	Kadow	1/9/2007	5/11/2007
0008848	MAT-140-203	Finite Math	3.00	04:30PM	05:55PM	M W	12	ILTV	Cuttel	1/9/2007	5/11/2007
0009086	MAT-157-203	Statistics	4.00	06:00PM	10:00PM	R	11	ILTV	Burrow	1/9/2007	5/11/2007
0008825	MAT-217-203	Calculus II	5.00	10:00AM	10:55AM	M T W R F	13	ICN	Peterson	1/9/2007	5/11/2007
<b>MANAGEMENT</b>											
0008408	MGT-101-203	Principles of Management	3.00	11:30AM	12:55PM	T R	11	ILTV	Anderson	1/9/2007	5/11/2007
<b>MARKETING</b>											
0008555	MKT-110-203	Principles of Marketing	3.00	10:00AM	10:55AM	M W F	12	ILTV	Reimer	1/9/2007	5/11/2007
0009107	MKT-140-203	Principles of Selling	3.00	03:00PM	04:25PM	M W	11	ILTV	Reimer	1/9/2007	5/11/2007
<b>PHILOSOPHY</b>											
0008309	PHI-101-203	Introduction to Philosophy	3.00	12:00PM	12:55PM	M W	11	HYBRD ILTV	Dingel	1/9/2007	5/11/2007
0008091	PHI-101-73	Introduction to Philosophy	3.00					CBCIP	Dingel	1/9/2007	5/11/2007
0008076	PHI-105-73	Introduction to Ethics	3.00					CBCIP	Dingel	1/9/2007	5/11/2007
0010340	PHI-105-203	Introduction to Ethics	3.00	06:00PM	09:00PM	W	12	ILTV	Staff	1/9/2007	5/11/2007
<b>PHYSICAL EDUCATION - COACHING OFFICIATING</b>											
0008967	PEC-110-53	Coaching Ethics, Tech, & Theory	1.00	04:30PM	09:45PM	W	13	ICN	Hale	1/10/2007	1/24/2007
0008972	PEC-115-53	Athletic Development & Human Growth	1.00	04:30PM	09:45PM	W	13	ICN	Hale	2/21/2007	3/7/2007
0008977	PEC-120-53	Body Structure & Function	1.00	04:30PM	09:45PM	W	13	ICN	Hale	1/31/2007	2/14/2007
0008982	PEC-126-53	Athletic Injury Prevention	2.00	04:30PM	09:45PM	W	13	ICN	Hale	3/21/2007	4/25/2007
<b>PHYSICAL EDUCATION AND HEALTH - GENERAL</b>											
0008101	PEH-102-73	Health	3.00					CBCIP	Steele	1/9/2007	5/11/2007
<b>POLITICAL SCIENCE</b>											
0008638	POL-111-13	American National Government	3.00				7	S CTR	McNeill	1/9/2007	5/11/2007
0008045	POL-111-73	American National Government	3.00					CBCIP	Bomgaars	1/9/2007	5/11/2007
<b>PRACTICAL NURSING</b>											
0009481	PNN-101-203	Mathematics for Health Professionals	1.00	04:30PM	05:55PM	T R	11	ILTV	Staff	1/9/2007	2/20/2007
0009473	PNN-141-40	Fundamentals of Nursing Skills Lab	4.00	06:00PM	10:00PM	T R	16		Rochleau	1/9/2007	5/17/2007
				08:00AM	12:00PM	S			Rochleau	1/13/2007	2/24/2007
				08:00AM	02:00PM	SU			Rochleau	2/4/2007	2/25/2007
				12:00PM	04:00PM	SU			Rochleau	1/14/2007	1/14/2007
0009250	PNN-275-30	Normal Nutrition	3.00	06:00PM	09:00PM	W	9		Staff	1/9/2007	5/11/2007
0009474	PNN-722-40	Fundamentals of Nursing Clinical	2.00	06:30AM	04:30PM	S SU			Rochleau	3/3/2007	5/13/2007
<b>PSYCHOLOGY</b>											
0008636	PSY-111-13	Introduction to Psychology	3.00				7	S CTR	McNeill	1/9/2007	5/11/2007
0008324	PSY-111-203	Introduction to Psychology	3.00	11:00AM	11:55AM	M W F	12	ILTV	Weipert	1/9/2007	5/11/2007
0009092	PSY-111-213	Introduction to Psychology	3.00	07:30AM	08:25AM	M W F	12	ILTV	Staff	1/9/2007	5/11/2007

0009117	PSY-111-223	Introduction to Psychology	3.00	06:00PM	09:00PM	T	12	ILTV	Gilbert	1/9/2007	5/11/2007
0008081	PSY-111-73	Introduction to Psychology	3.00					CBCIP	Harmon	1/9/2007	5/11/2007
0008056	PSY-223-73	Child & Adolescent Psychology	3.00					CBCIP	Davis	1/9/2007	5/11/2007
0008040	PSY-241-73	Abnormal Psychology	3.00					CBCIP	Davis	1/9/2007	5/11/2007

## ALGONA CAMPUS

Please watch our WEB SITE for updates: [www.iowalakes.edu](http://www.iowalakes.edu) ♦Denoted courses appear in cumulative credit totals but do not count toward graduation requirements.

Synonym	Course/Section	Title	Credit	Start Time	End Time	Days	Room	Course types	Last Name	Start Date	End Date
<b>READING</b>											
0008624	RDG-030-13	♦Introduction to College Reading I	1.00				7	S CTR	Dodge	1/9/2007	5/11/2007
0008625	RDG-031-13	♦Introduction to College Reading II	1.00				7	S CTR	McNeill	1/9/2007	5/11/2007
0008630	RDG-120-13	College Reading	1.00				7	S CTR	McNeill	1/9/2007	5/11/2007
<b>RELIGION</b>											
0008878	REL-101-100	*Survey of World Religions	3.00	08:00AM	12:00PM	W R F	9		Schon	12/21/2006	1/6/2007
				08:00AM	04:30PM	T S	9		Schon	12/21/2006	1/6/2007
		*Fast Track: 12/21, 22, 23, 1/2, 3, 4, 5, 6									
<b>STUDENT DEVELOPMENT</b>											
0009929	SDV-075-13	♦Strategies for Academic Success	1.00				7	S CTR	McNeill	1/9/2007	5/11/2007
0008686	SDV-090-203	College 101	0.00	05:45PM	08:00PM	M	12		Mohani	1/8/2007	1/8/2007
0008884	SDV-103-104	*Successful Learning	1.00	08:00AM	12:00PM	T W R F	10		Nettleton	1/2/2007	1/5/2007
0008629	SDV-103-13	Successful Learning	1.00				7	S CTR	McNeill	1/9/2007	5/11/2007
		*Fast Track: 1/2, 3, 4, 5									
<b>SOCIOLOGY</b>											
0008637	SOC-110-13	Introduction to Sociology	3.00				7	S CTR	McNeill	1/9/2007	5/11/2007
0009251	SOC-110-30	Introduction to Sociology	3.00	06:00PM	09:00PM	R	9		Staff	1/9/2007	5/11/2007
0008116	SOC-110-73	Introduction to Sociology	3.00					CBCIP	Helmers	1/9/2006	5/11/2007
0008096	SOC-120-73	Marriage and Family	3.00					CBCIP	Helmers	1/9/2007	5/11/2007
<b>SPEECH</b>											
0008881	SPC-101-107	*Fundamentals of Oral Communications	3.00	08:30AM	04:00PM	T R F	16	HYBRD	Jedlicka	12/21/2006	1/5/2007
		*Fast Track: Hybrid - 12/21, 1/2, 4, 5									

## EMMETSBURG CAMPUS

Please watch our WEB SITE for updates: [www.iowalakes.edu](http://www.iowalakes.edu) ♦Denoted courses appear in cumulative credit totals but do not count toward graduation requirements.

<b>ACCOUNTING</b>											
0008522	ACC-111-100	Introduction to Accounting	3.00	11:00AM	11:55AM	M W F	745		Erickson	1/9/2007	5/11/2007
0008569	ACC-111-101	Introduction to Accounting	3.00	08:00AM	08:55AM	M T W R F	3101		Staff	1/9/2007	4/6/2007
0008618	ACC-131-11	Principles of Accounting I	4.00				230	S CTR	Peltz	1/9/2007	5/11/2007
0008495	ACC-132-201	Principles of Accounting II	4.00	08:30AM	09:55AM	M W	510	ILTV	Berven	1/9/2007	5/11/2007
				09:00AM	09:55AM	F	510	ILTV	Berven	1/9/2007	5/11/2007
0009270	ACC-161-101	Payroll Accounting	3.00	09:00AM	09:55AM	M W F	310		Jones	1/9/2007	5/11/2007
0008500	ACC-232-201	Intermediate Accounting II	4.00	09:00AM	09:55AM	T R	510	HYBRD ILTV	Berven	1/9/2007	5/11/2007
				12:00PM	12:55PM	F	715	HYBRD ILTV	Berven	1/9/2007	5/11/2007
0009060	ACC-261-201	Income Tax Accounting	3.00	02:00PM	03:25PM	T R	715	ILTV	Grimm	1/9/2007	5/11/2007
0009272	ACC-310-100	Computer Accounting	2.00	09:00AM	09:55AM	T R	310		Jones	1/9/2007	5/11/2007
<b>ADMINISTRATIVE ASSISTANT</b>											
0008689	ADM-106-11	Introduction to Keyboarding	2.00				230	S CTR	Peltz	1/9/2007	5/11/2007
0008204	ADM-142-100	Desktop Publishing	3.00	08:00AM	08:55AM	M W	330	HYBRD	Halverson	5/9/2007	5/11/2007
0009113	ADM-162-100	Office Procedures	3.00	10:00AM	11:25AM	T R			Staff	1/9/2007	5/11/2007
0009273	ADM-255-104	Business Professionalism II	1.00	08:00AM	08:55AM	R	310		Jones	1/9/2007	5/11/2007
0009274	ADM-255-105	Business Professionalism II	0.00	08:00AM	08:55AM	R	310		Jones	1/9/2007	5/11/2007
0009279	ADM-355-104	Business Professionalism IV	1.00	08:00AM	08:55AM	R	310		Jones	1/9/2007	5/11/2007
0009280	ADM-355-105	Business Professionalism IV	0.00	08:00AM	08:55AM	R	310		Jones	1/9/2007	5/11/2007
0009283	ADM-941-100	Practicum	5.00				310		Jones	1/9/2007	5/11/2007
<b>AGRICULTURE - AGRONOMY</b>											
0008222	AGA-114-100	Principles of Agronomy	3.00	08:00AM	08:55AM	M W F	3200		Christensen	1/9/2007	5/11/2007
0009194	AGA-156-101	Introduction to Soils	3.00	09:00AM	09:55AM	M T W R	3100		Williamson	1/9/2007	4/5/2007
0008283	AGA-219-100	Planting & Seeding Seminar/Lab	1.00				3101		Carlson	1/19/2007	4/13/2007
0008253	AGA-283-100	Pesticide Application Cert	2.00	10:00AM	10:55AM	M T W R F	3203		Swanson	1/9/2007	3/9/2007

0008220	AGA-284-100	Agricultural Chemicals II	3.00	01:00PM	01:55PM	M T W R F	3200		Christensen	1/9/2007	3/9/2007
---------	-------------	---------------------------	------	---------	---------	-----------	------	--	-------------	----------	----------



## BIOMASS ENERGY PROCESSING (Renewable Energy)

The Biomass Energy Processing program offers the knowledge and skills applicable to employment in facilities processing corn and/or soybeans into primary products, such as ethanol and biodiesel, and usable co-products. Iowa has both the crop supply and an increasing number of facilities producing value-added agricultural products and renewable energy sources.

# EMMETSBURG CAMPUS

Please watch our WEB SITE for updates: [www.iowalakes.edu](http://www.iowalakes.edu) ♦ Denoted courses appear in cumulative credit totals but do not count toward graduation requirements.

Synonym	Course/Section	Title	Credit	Start Time	End Time	Days	Room	Course types	Last Name	Start Date	End Date
<b>AGRICULTURE - ANIMAL SCIENCE</b>											
0008258	AGS-114-100	Survey of the Animal Industry	2.00	08:00AM	08:55AM	M T W R F	3203		Swanson	1/9/2007	3/9/2007
0008271	AGS-240-100	Animal Health	2.00	08:00AM	08:55AM	M W F	3100		Williamson	1/9/2007	4/5/2007
0008269	AGS-317-100	Animal Nutrition	2.00	11:00AM	11:55AM	M T W R F	3100		Williamson	1/9/2007	3/9/2007
0008268	AGS-350-100	Artificial Insemination of Cattle	1.00						Williamson	1/9/2007	5/11/2007
0008287	AGS-520-100	Swine Records & Analysis	3.00	09:00AM	09:55AM	T R	3101		Carlson	1/9/2007	4/5/2007
				10:00AM	10:55AM	M T W R F	3101		Carlson	1/9/2007	4/5/2007
0008286	AGS-529-100	Swine Reproduction & Management	2.00	01:00PM	03:15PM	M W	3101		Carlson	1/9/2007	3/9/2007
0008270	AGS-557-100	Advanced Beef Cow Production	2.00	01:00PM	03:15PM	T R	3100		Williamson	1/9/2007	3/9/2007
0008272	AGS-561-100	Advanced Beef Production	2.00	10:00AM	10:55AM	M W F	3100		Williamson	1/9/2007	4/5/2007
0008273	AGS-562-100	Farm Enterprise Beef Feedlot	1.00						Williamson	1/9/2007	4/5/2007
0008274	AGS-563-100	Farm Enterprise Exp/Cow-Calf	1.00						Williamson	1/9/2007	4/5/2007
0008288	AGS-565-100	Farm Enterprise Swine Tech	1.00						Carlson	1/9/2007	4/5/2007
0008289	AGS-566-100	Farm Enterprise Swine Management	1.00						Carlson	1/9/2007	4/5/2007
<b>AGRICULTURE - COMPREHENSIVE</b>											
0008257	AGC-104-100	Applied Computers in Agriculture	2.00	01:00PM	02:50PM	R	3204		Swanson	1/9/2007	4/13/2007
				02:00PM	02:55PM	M	3204		Swanson	1/9/2007	4/13/2007
0008255	AGC-200-100	Career Seminar	1.00						Swanson	1/9/2007	4/13/2007
0008266	AGC-210-100	Employment Seminar	1.00	01:00PM	01:55PM	M W F	3100		Williamson	1/9/2007	4/5/2007
0008254	AGC-215-100	Agricultural Sociology	2.00	02:00PM	02:55PM	T W	3203		Swanson	1/9/2007	4/13/2007
				09:00AM	09:55AM	T R	3203		Swanson	1/9/2007	4/13/2007
0008221	AGC-851-100	Emp Exp II-Agribusines	5.00						Christensen	3/12/2007	5/11/2007
0008256	AGC-853-100	Employment Exp IV-Agribusines	2.00						Swanson	4/16/2007	5/11/2007
0008265	AGC-855-100	Employment Experience II-FM	3.00						Williamson	4/9/2007	5/11/2007
0008282	AGC-855-101	Employment Experience II-FM	3.00						Carlson	4/16/2007	5/11/2007
0008267	AGC-857-100	Employment Experience IV - FM	3.00						Williamson	4/9/2007	5/11/2007
0008284	AGC-857-101	Employment Experience IV - FM	3.00						Carlson	4/16/2007	5/11/2007
<b>AGRICULTURE - FARM MANAGEMENT</b>											
0008219	AGB-101-100	Ag Economics & Management	3.00	10:00AM	10:55AM	M T W R	3200		Christensen	1/9/2007	4/13/2007
0008252	AGB-210-100	Agricultural Law	2.00	01:00PM	01:55PM	M T W	3203		Swanson	1/9/2007	4/13/2007
0008281	AGB-309-100	Farm Machinery Mgmt	2.00	09:00AM	09:55AM	M W F	3204		Carlson	1/9/2007	4/13/2007
0008280	AGB-466-100	Agricultural Finance	3.00	11:00AM	11:55AM	M T W R F	3204		Carlson	1/9/2007	4/13/2007
0008218	AGB-930-100	Agriculture Seminar	2.00	09:00AM	09:55AM	M W F	3200		Christensen	1/9/2007	4/13/2007
<b>AGRICULTURE - HORTICULTURE (TURF GRASS)</b>											
0008299	AGH-129-100	Plant Material III	3.00	08:00AM	09:50AM	M W F	3208		Fehr	1/9/2007	3/9/2007
0008298	AGH-151-100	Landscape Design Techniques	2.00	01:00PM	02:55PM	M W	3208		Fehr	1/9/2007	3/9/2007
				11:00AM	11:55AM	M W	3208		Fehr	1/9/2007	3/9/2007
				11:00AM	12:25PM	F	3208		Fehr	1/9/2007	3/9/2007
0008297	AGH-256-100	Hort Chemicals	1.00	11:00AM	11:55AM	T R	3208		Fehr	1/9/2007	3/9/2007
0008296	AGH-850-100	Occupational Experience I	4.00						Fehr	3/19/2007	5/25/2007
<b>AGRICULTURE - MECHANICS</b>											
0009303	AGM-203-100	*Ag Welding	2.00				2104		Farnsworth	1/9/2007	5/11/2007
0008564	AGM-300-100	Fundamentals of Electricity	3.00	06:30AM	07:45AM	M W F	2103		Bredeson	1/9/2007	4/13/2007
				08:00AM	08:45AM	T	2103		Bredeson	1/9/2007	4/13/2007
0008565	AGM-301-100	Fundamentals of Electricity Lab	2.00	08:30AM	09:30AM	R	2103		Bredeson	1/9/2007	4/13/2007
				08:45AM	10:30AM	T	2103		Bredeson	1/9/2007	4/13/2007
				09:30AM	10:30AM	M W F	2103		Bredeson	1/9/2007	4/13/2007
0008566	AGM-302-100	Electrical Components	2.00	06:30AM	07:45AM	T	2103		Bredeson	1/9/2007	4/13/2007
				06:30AM	09:30AM	R	2103		Bredeson	1/9/2007	4/13/2007
0008567	AGM-303-100	Electrical Components Lab	3.00	09:31AM	12:00PM	R	2103		Bredeson	1/9/2007	4/13/2007
				10:31AM	12:00PM	M T W F	2103		Bredeson	1/9/2007	4/13/2007

0008532	AGM-430-100	Differentials and Final Drives	6.00	10:00AM	12:45PM	M T W R F	2103		Kleve	1/9/2007	5/11/2007
0008533	AGM-431-100	Transmissions	7.00	06:30AM	08:55AM	M T W R	2103		Kleve	1/9/2007	4/13/2007
0008531	AGM-850-100	Dealership Experience	2.00	07:00AM	05:55PM	M T W R F	2103		Kleve	4/16/2007	5/11/2007
0008561	AGM-850-101	Dealership Experience	2.00						Bredeson	4/16/2007	5/11/2007
		*For Agriculture Students									
<b>AGRICULTURE - PRECISION AG</b>											
0010169	AGP-242-100	Precision Ag Application	2.00	11:00AM	11:55AM	M T W R			Staff	1/9/2007	3/13/2007
<b>ANTHROPOLOGY</b>											
0008048	ANT-105-71	Cultural Anthropology	3.00					CBCIP	Tigges	1/9/2007	5/11/2007

## EMMETSBURG CAMPUS

Please watch our WEB SITE for updates: [www.iowalakes.edu](http://www.iowalakes.edu) ♦ Denoted courses appear in cumulative credit totals but do not count toward graduation requirements.

Synonym	Course/Section	Title	Credit	Start Time	End Time	Days	Room	Course types	Last Name	Start Date	End Date
<b>ART</b>											
0008750	ART-101-201	Art Appreciation	3.00	10:00AM	11:25AM	T R	510	ILTV	Lindell	1/9/2007	5/11/2007
0008064	ART-206-71	Art History	3.00					CBCIP	Kattner	1/9/2007	5/11/2007
<b>ASSOCIATE DEGREE NURSING</b>											
0009180	ADN-401-100	Nursing Interv/Maternal Child Health	6.00	08:00AM	03:00PM	R			Bailey	1/11/2007	5/10/2007
0009181	ADN-402-100	Nursing Int Mat&Child Health-Clinical	2.00	06:30AM	02:30PM	T W			Bailey	1/23/2007	2/28/2007
0009182	ADN-402-101	Nursing Int Mat&Child Health-Clinical	2.00	06:30AM	02:30PM	T W			Bailey	3/20/2007	4/25/2007
0009183	ADN-461-100	Nursing Interv/Mental Health	6.00	08:00AM	03:00PM	R			Gengerke	1/11/2007	5/10/2007
0009184	ADN-462-100	Nursing Interv/Mental Health Clinical	2.00	06:30AM	02:30PM	T W			Gengerke	1/23/2007	2/28/2007
0009185	ADN-462-101	Nursing Interv/Mental Health Clinical	2.00	06:30AM	02:30PM	T W			Gengerke	3/20/2007	4/25/2007
0009186	ADN-506-100	Nursing Interv/Adult Health II	8.00	08:00AM	03:00PM	T W			Oppenheimer	1/9/2007	1/17/2007
				08:00AM	03:00PM	F			Oppenheimer	1/9/2007	5/9/2007
				12:00PM	03:00PM	M			Oppenheimer	1/9/2007	5/9/2007
0009187	ADN-506-101	Nursing Interv/Adult Health II	8.00	08:00AM	03:00PM	F			Spitt	1/9/2007	5/9/2007
				08:00AM	03:00PM	T W			Spitt	1/9/2007	1/17/2007
				12:00PM	03:00PM	M			Spitt	1/9/2007	5/9/2007
0009188	ADN-507-100	Nursing Interv/Adult Health II Clinical	2.00	06:30AM	02:30PM	T W			Spitt	1/23/2007	2/28/2007
0009189	ADN-507-101	Nursing Interv/Adult Health II Clinical	2.00	06:30AM	02:30PM	T W			Oppenheimer	3/20/2007	4/25/2007
<b>AUTOMOTIVE TECHNOLOGY</b>											
0009502	AUT-184-100	Brakes Lab	3.00	07:30AM	11:00AM	M W	140		Jacobson	2/26/2007	4/5/2007
				07:30AM	11:30AM	T R	140		Jacobson	2/26/2007	4/5/2007
0009500	AUT-311-100	Engine Repair Lab	3.00	07:30AM	10:30AM	M W	140		Jacobson	1/9/2007	2/22/2007
				07:30AM	11:30AM	T R	140		Jacobson	1/9/2007	2/22/2007
0009503	AUT-510-100	Brakes Theory	2.00	12:00PM	03:00PM	M W	140		Jacobson	2/26/2007	4/5/2007
0009504	AUT-704-100	Auto Heating & Air Conditioning	4.00	07:30AM	10:45AM	M W	140		Jacobson	4/16/2007	5/10/2007
				07:30AM	11:45AM	T R	140		Jacobson	4/16/2007	5/10/2007
				11:15AM	03:00PM	M W	140		Jacobson	4/16/2007	5/10/2007
0009312	AUT-827-100	Auto Ignition Systems	4.00	07:30AM	12:45PM	M R	180		Danielson	2/12/2007	3/8/2007
				07:30AM	11:30AM	T W	180		Danielson	2/12/2007	3/8/2007
				12:15PM	03:00PM	T W	180		Danielson	2/12/2007	3/8/2007
0009311	AUT-834-100	Auto Fuel Systems	4.00	07:30AM	12:45PM	M R	180		Danielson	1/9/2007	2/8/2007
				07:30AM	11:30AM	T W	180		Danielson	1/9/2007	2/8/2007
				12:15PM	03:00PM	T W	180		Danielson	1/9/2007	2/8/2007
0009313	AUT-842-100	Auto Computerized Eng Controls	4.00	07:30AM	12:45PM	M R	180		Danielson	3/19/2007	4/17/2007
				07:30AM	11:30AM	T W	180		Danielson	3/19/2007	4/17/2007
				12:15PM	03:00PM	T W	180		Danielson	3/19/2007	4/17/2007
0009314	AUT-851-100	Auto Eng Performance Diagnosis	3.00	07:30AM	12:45PM	M R	180		Danielson	4/18/2007	5/11/2007
				07:30AM	11:30AM	T W	180		Danielson	4/18/2007	5/11/2007
				12:15PM	03:00PM	T W	180		Danielson	4/18/2007	5/11/2007
0009501	AUT-938-100	Engine Repair Theory	3.00	11:15AM	03:00PM	M W	140		Jacobson	2/26/2007	4/5/2007
<b>BIOLOGY</b>											
0009167	BIO-105-101	Introductory Biology	4.00	09:00AM	09:55AM	M W F	710		Miller	1/9/2007	5/11/2007
				11:30AM	01:20PM	T	710		Miller	1/9/2007	5/11/2007
0009171	BIO-113-100	General Biology II	4.00	02:30PM	04:20PM	T	710		Miller	1/9/2007	5/11/2007
				10:00AM	10:55AM	M W F	710		Miller	1/9/2007	5/11/2007
0009168	BIO-141-100	Ecology & Environment Concepts	4.00	01:00PM	01:55PM	M W F	282		Miller	1/9/2007	5/11/2007
				01:00PM	02:50PM	R	710		Miller	1/9/2007	5/11/2007
0009019	BIO-169-100	Human Anatomy & Physiology I	4.00	09:00AM	10:55AM	M	710		Cornwall	1/9/2007	5/11/2007

				09:00AM	09:55AM	F	710		Cornwall	1/9/2007	5/11/2007
				10:00AM	11:55AM	F	710		Cornwall	1/9/2007	5/11/2007
0009015	BIO-174-100	**Human Anatomy & Physiology II	4.00	08:00AM	09:55AM	M	282		Norris	1/9/2007	5/11/2007
				08:00AM	08:55AM	R	282		Norris	1/9/2007	5/11/2007
				09:00AM	10:55AM	R	710		Norris	1/9/2007	5/11/2007
0009016	BIO-174-101	***Human Anatomy & Physiology II	4.00	08:00AM	09:55AM	W	710		Norris	1/9/2007	5/11/2007
				08:00AM	09:55AM	T	282		Norris	1/9/2007	5/11/2007
				10:00AM	10:55AM	M	282		Norris	1/9/2007	5/11/2007
0009297	BIO-174-201	*Human Anatomy & Physiology II	4.00	06:00PM	09:00PM	M	510	ILTV	Abbott	1/9/2007	5/11/2007
0009022	BIO-186-100	Microbiology	4.00	01:00PM	01:55PM	M W F	710		Cornwall	1/9/2007	5/11/2007
		*Must register for one lab - BIO-174B-100 or BIO-174B-101									
		**Nursing students in first semester									
		***Nursing students in second semester									

## EMMETSBURG CAMPUS

Please watch our WEB SITE for updates: [www.iowalakes.edu](http://www.iowalakes.edu) ♦ Denoted courses appear in cumulative credit totals but do not count toward graduation requirements.

Synonym	Course/Section	Title	Credit	Start Time	End Time	Days	Room	Course types	Last Name	Start Date	End Date
<b>BIOPROCESSING TECHNOLOGY (BIOMASS)</b>				02:00PM	02:55PM	W F	710		Cornwall	1/9/2007	5/11/2007
0009956	BPT-108-100	Plant Management	3.00	01:00PM	02:25PM	T R	3210		Peterson	1/9/2007	5/11/2007
0009955	BPT-110-100	Industrial Equipment	3.00	11:00AM	12:50PM	M W	3210		Peterson	1/9/2007	5/11/2007
0009957	BPT-124-100	Mech Fund-Process Control I	4.00	09:00AM	10:50AM	T R F	3210		Peterson	1/9/2007	5/11/2007
0009954	BPT-130-100	Water Treatment	3.00	01:00PM	02:55PM	M	3210		Peterson	1/9/2007	5/11/2007
				01:00PM	01:55PM	W F	3210		Peterson	1/9/2007	5/11/2007
<b>BUSINESS</b>											
0008472	BUS-102-100	Introduction to Business	3.00	08:30AM	09:55AM	T R	725		Wimmer	1/9/2007	5/11/2007
0008508	BUS-115-201	Business Correspondence	2.00	01:00PM	01:55PM	F	510	HYBRD ILTV	Berven	1/9/2007	5/11/2007
0008205	BUS-121-100	*Business Communications	3.00	09:00AM	09:55AM	M W F	330		Halverson	1/9/2007	5/11/2007
0009163	BUS-125-100	Business Principles	2.00	10:00AM	11:30AM	M W	3102		Bohl	1/9/2007	5/11/2007
0008568	BUS-126-100	Business Principles	3.00	08:00AM	09:29AM	M W F	2103		Bredeson	1/9/2007	4/13/2007
0009310	BUS-126-101	**Business Principles	3.00	01:30PM	03:00PM	M R	180		Danielson	1/9/2007	5/11/2007
0008242	BUS-211-100	Business Statistics	4.00	08:00AM	09:50AM	T R	520		Kadow	1/9/2007	5/11/2007
0009079	BUS-211-201	Business Statistics	4.00	06:00PM	10:00PM	R	715	ILTV	Staff	1/9/2007	5/11/2007
0008550	BUS-932-102	Practicum	5.00						Reimer	1/9/2007	5/11/2007
0009277	BUS-938-100	Office OJT	5.00	08:00AM	08:55AM	R	310		Jones	1/9/2007	5/11/2007
		*For Hotel & Restaurant Management students									
		**For Automotive Technology students									
<b>BUSINESS COMPUTER APPLICATIONS</b>											
0008577	BCA-185-100	Beginning Web Page Development	3.00	02:30PM	05:25PM	T	310	HYBRD	Jones	1/9/2007	3/7/2007
0009284	BCA-185-101	Beginning Web Page Development	3.00	11:00AM	11:55AM	M W F	310		Jones	1/9/2007	5/11/2007
<b>CASINO MANAGEMENT</b>											
0009959	CAS-113-100	Introduction to Gaming	3.00						Staff	1/9/2007	5/11/2007
0009960	CAS-122-100	Gaming - Managing of Table Games	3.00						Staff	1/9/2007	5/11/2007
0009961	CAS-932-100	Gaming Internship	1.00						Staff	1/9/2007	5/11/2007
<b>CHEMISTRY</b>											
0009110	CHM-151-201	*College Chemistry I	4.00	04:30PM	08:00PM	T R		ILTV	Torney	1/9/2007	5/11/2007
0009170	CHM-152-101	College Chemistry II	4.00	02:30PM	04:20PM	W	710		Miller	1/9/2007	5/11/2007
				11:00AM	11:55AM	M W F	710		Miller	1/9/2007	5/11/2007
		*Must register for one lab at either Algona or Spencer									
<b>COMPUTER PROGRAMMING</b>											
0008576	CIS-141-100	Computer Science	3.00	02:30PM	05:25PM	T R	320		Staff	3/8/2007	5/11/2007
<b>COMMUNICATIONS</b>											
0009746	COM-725-100	*Workplace Communications	2.00	09:00AM	09:55AM	T R	420		Stubbs	1/9/2007	5/11/2007
0009747	COM-725-101	**Workplace Communications	2.00	01:00PM	01:55PM	T R	520		Stubbs	1/9/2007	5/11/2007
0008300	COM-780-100	Written Comm in Workplace	2.00	01:00PM	02:50PM	T R	450		Jedlicka	1/9/2007	3/7/2007
0010165	COM-780-101	***Written Comm in Workplace	2.00	09:00AM	09:55AM	M T W F			Staff	1/9/2007	3/5/2007
		*For Construction Technology students only.									
		**For Collision Technology, Biomass, and Welding students only									
		***For Agribusiness students									
<b>COLLISION REPAIR/REFINISHING</b>											
0008483	CRR-742-100	Estimating Theory	2.00	07:30AM	10:30AM	M W	120		Schultz	3/28/2007	4/19/2007
				07:30AM	09:55AM	T R	120		Schultz	3/28/2007	4/19/2007
0008484	CRR-749-100	Estimating Lab	1.00	10:35AM	03:30PM	M W	120		Schultz	3/28/2007	4/19/2007
				11:00AM	03:30PM	T R	120		Schultz	3/28/2007	4/19/2007
0008485	CRR-808-100	Refinishing I Theory	1.00	07:30AM	09:55AM	M T W R	120		Schultz	1/9/2007	1/22/2007
0008486	CRR-809-100	Refinishing I Lab	3.00	10:00AM	03:30PM	M W	120		Schultz	1/9/2007	2/12/2007
				11:00AM	03:30PM	T R	120		Schultz	1/9/2007	2/12/2007

0009193	CRR-838-100	Refinishing II Theory	2.00	07:30AM	09:55AM	M T W R	120		Schultz	2/13/2007	3/7/2007
0008487	CRR-839-100	Refinishing II Lab	3.00	10:00AM	03:30PM	M W	120		Schultz	2/13/2007	3/7/2007
				11:00AM	03:30PM	T R	120		Schultz	2/13/2007	3/7/2007
<b>COMPUTER NETWORKING</b>											
0008570	NET-314-100	Windows Server	4.00	10:00AM	02:25PM	T R	320		Reimer	1/9/2007	3/7/2007
0008571	NET-331-100	Windows 2000 Networking Infrastructure	4.00	10:00AM	02:25PM	T R	320		Reimer	3/8/2007	5/11/2007
0008575	NET-374-100	Design Windows Network Infrastructure	4.00	10:00AM	02:25PM	M W	320		Reimer	1/9/2007	3/7/2007
0008574	NET-653-100	Microsoft Exchange Server	4.00	10:00AM	02:30PM	M W	320		Reimer	3/8/2007	5/11/2007
0008572	NET-910-100	Co-op Work Experience	3.00						Reimer	1/9/2007	5/11/2007
0008573	NET-910-101	Co-op Work Experience	5.00				320		Reimer	1/9/2007	5/11/2007
<b>COMPUTER SCIENCE</b>											
0008206	CSC-110-100	Introduction to Computers	3.00	10:00AM	10:55AM	M W	330	HYBRD	Halverson	1/9/2007	5/11/2007
0008207	CSC-110-101	Introduction to Computers	3.00	08:30AM	09:55AM	T R	330		Halverson	1/9/2007	5/11/2007
0008588	CSC-110-107	*Introduction to Computers	3.00	10:00AM	11:25AM	T R	330		Halverson	1/9/2007	5/11/2007
		*For Motorcycle/Small Engine students only.									

## EMMETSBURG CAMPUS

Please watch our WEB SITE for updates: [www.iowalakes.edu](http://www.iowalakes.edu) ♦ Denoted courses appear in cumulative credit totals but do not count toward graduation requirements.

Synonym	Course/Section	Title	Credit	Start Time	End Time	Days	Room	Course types	Last Name	Start Date	End Date
<b>CONSTRUCTION</b>											
0009304	CON-106-100	*Construction Welding	1.00				2104		Farnsworth	1/9/2007	5/11/2007
0008210	CON-120-100	Construction Estimating	1.00	03:00PM	03:55PM	M	105		Schmidt	1/9/2007	5/11/2007
0010148	CON-125-100	Construction Estimating II	3.00	04:00PM	17:25PM	T R	105		Schmidt	1/9/2007	5/11/2007
0008212	CON-159-100	Carpentry Level IV	5.00	12:00PM	03:55PM	T R	105		Schmidt	1/9/2007	5/11/2007
									Schmidt	1/9/2007	5/11/2007
0008214	CON-217-100	Exterior Finishing	3.00	06:30AM	08:55AM	T R	105		Menning	1/9/2007	5/11/2007
0008213	CON-225-100	Techniques of Exterior Covering	6.00	07:30AM	12:25PM	M W	105		Menning	1/9/2007	5/11/2007
0008216	CON-228-100	Methods of Interior Finishing	3.00	12:30PM	02:55PM	M W	105		Menning	1/9/2007	5/11/2007
0008215	CON-229-100	Installation of Interior Finishing	3.00	12:25PM	02:55PM	M W	105		Menning	1/9/2007	5/11/2007
0008211	CON-932-100	Internship	3.00						Schmidt	1/9/2007	5/11/2007
		*For Construction Technology students only									
<b>DISABILITY SERVICES</b>											
0009785	DSV-125-100	*Behavior Management	3.00	01:00PM	02:20PM	T R			Kogel	1/9/2007	5/11/2007
0009111	DSV-135-102	Assessment and Instruction	3.00	01:00PM	01:55PM	M W F	5113		Nielsen	1/9/2007	5/11/2007
0009112	DSV-932-101	Internship Hum Serv/Disab Stdy	2.00				5113		Nielsen	1/9/2007	5/11/2007
		*For SAVE students only									
<b>EARLY CHILDHOOD EDUCATION</b>											
0008227	ECE-110-100	Child Care Professionals I	1.00	03:00PM	03:55PM	W	435		Swanson	1/9/2007	5/11/2007
0008228	ECE-111-100	Child Care Professionals II	1.00	03:00PM	03:55PM	W	435		Swanson	1/9/2007	5/11/2007
0008230	ECE-163-100	Play/Creative Arts for Children	4.00	09:00AM	09:55AM	M F	435		Swanson	1/9/2007	5/11/2007
				09:00AM	10:50AM	W	435		Swanson	1/9/2007	5/11/2007
0008239	ECE-164-100	Inquiry Activities	4.00	10:00AM	11:55AM	F	435		Simpson	1/9/2007	5/11/2007
				11:00AM	11:55AM	M W	435		Simpson	1/9/2007	5/11/2007
0008229	ECE-182-100	Practicum I	2.00	08:00AM	11:45AM	T R	435		Swanson	1/9/2007	5/11/2007
				10:00AM	10:55AM	M	435		Swanson	1/9/2007	5/11/2007
0008237	ECE-182-101	Practicum I	2.00	08:00AM	11:45AM	T R	425		Simpson	1/9/2007	5/11/2007
				10:00AM	10:55AM	M	425		Simpson	1/9/2007	5/11/2007
0008231	ECE-210-100	Early Childhood Prof I	1.00	03:00PM	03:55PM	W	435		Swanson	1/9/2007	5/11/2007
0008232	ECE-211-100	Early Childhood Prof II	1.00	03:00PM	03:55PM	W	435		Swanson	1/9/2007	5/11/2007
0008238	ECE-243-100	Early Childhood Guidance	3.00	01:00PM	01:55PM	M W F	425		Simpson	1/9/2007	5/11/2007
0008233	ECE-273-100	Practicum III	1.00	08:00AM	11:55AM	T	425		Swanson	1/9/2007	5/11/2007
0008234	ECE-290-100	Early Childhood Program Admin	3.00	01:00PM	01:55PM	M W F	435		Swanson	1/9/2007	5/11/2007
<b>ECONOMICS</b>											
0008461	ECN-120-201	Principles of Macroeconomics	3.00	10:00AM	10:55AM	M W F	715	ILTV	Wimmer	1/9/2007	5/11/2007
0009127	ECN-120-211	Principles of Macroeconomics	3.00	06:00PM	09:00PM	R	510	ILTV	Wimmer	1/9/2007	5/11/2007
0008467	ECN-130-201	Principles of Microeconomics	3.00	10:00AM	11:25AM	T R	715	ILTV	Wimmer	1/9/2007	5/11/2007
<b>EDUCATION</b>											
0008589	EDU-215-201	*Introduction to Education	3.00	03:00PM	04:25PM	T R	510	ILTV	Ver Mulm	1/9/2007	5/11/2007
0008600	EDU-217-100	**Introduction to Education	1.00						Ver Mulm	1/9/2007	5/11/2007
0008240	EDU-235-100	Children's Literature	3.00	01:00PM	02:25PM	T R	435		Simpson	1/9/2007	5/11/2007
0008781	EDU-235-201	Children's Literature	3.00	12:00PM	12:55PM	M W F	510	ILTV	Barr/Bunt	1/9/2007	5/11/2007
		*Must take EDU-217 Introduction to Education Lab									
		**Students must register for EDU-215 Introduction to Education									
<b>EMERGENCY MEDICAL SERVICES</b>											
0009234	EMS-612-30	PS - Preparatory and Lab	6.00	06:00PM	10:00PM	M R	4107		Dobbins	1/11/2007	5/10/2007
0009232	EMS-614-30	PS - Trauma & Lab	4.00	06:00PM	10:00PM	M W	4107		Dobbins	1/10/2007	3/19/2007
0009233	EMS-624-30	PS Special Considerations/Lab	4.00	06:00PM	10:00PM	M W	4107		Dobbins	3/21/2007	5/9/2007
<b>ENGLISH COMPOSITION</b>											
0008691	ENG-003-11	Writing Foundations	1.00				230	S CTR	Peltz	1/9/2007	5/11/2007

0008693	ENG-012-11	◆Basic Writing	2.00				230	S CTR	Peltz	1/9/2007	5/11/2007
0008692	ENG-028-100	◆Writing Strategies	2.00	10:00AM	10:55AM	M W	420		Peltz	1/9/2007	5/11/2007
0010152	ENG-028-11	◆Writing Strategies	2.00				230	S CTR	Peltz	1/9/2007	5/11/2007
0008712	ENG-062-100	◆Introduction to College Writing	2.00	01:00PM	01:55PM	T R	420		Neary	1/9/2007	5/11/2007
0008711	ENG-062-11	◆Introduction to College Writing	2.00				230	S CTR	Neary	1/9/2007	5/11/2007
0009743	ENG-105-107	Composition I	3.00	09:00AM	09:55AM	M W F	520		Stubbs	1/9/2007	5/11/2007
0009744	ENG-105-108	Composition I	3.00	10:00AM	10:55AM	M W F	520		Stubbs	1/9/2007	5/11/2007
0009745	ENG-105-109	Composition I	3.00	01:00PM	02:25PM	T R	725		Stubbs	1/9/2007	5/11/2007
0008802	ENG-105-201	Composition I	3.00	01:00PM	01:55PM	M W	510	HYBRD ILTV	Naber	1/9/2007	5/11/2007
0008793	ENG-106-102	Composition II	3.00	12:00PM	12:55PM	M W F	725		Schoenewe	1/9/2007	5/11/2007
0009732	ENG-106-105	Composition II	3.00	08:00AM	08:55AM	M W F			Schoenewe	1/9/2007	5/11/2007
0009741	ENG-106-106	Composition II	3.00	08:00AM	08:55AM	M W F	520		Stubbs	1/9/2007	5/11/2007
0008807	ENG-106-201	Composition II	3.00	02:00PM	02:55PM	M W	715	HYBRD ILTV	Naber	1/9/2007	5/11/2007
0008817	ENG-106-211	Composition II	3.00	07:30AM	08:55AM	T R	510	HYBRD ILTV	Naber	1/9/2007	5/11/2007
0009065	ENG-106-221	Composition II	3.00	04:30PM	05:55PM	M W	715	ILTV	Devereaux	1/9/2007	5/11/2007
0009071	ENG-106-231	Composition II	3.00	06:00PM	09:00PM	T	715	ILTV	Staff	1/9/2007	5/11/2007
0008812	ENG-106-51	Composition II	3.00	07:30AM	08:25AM	M W F	818	ICN	Naber	1/9/2007	5/11/2007

## EMMETSBURG CAMPUS

Please watch our WEB SITE for updates: [www.iowalakes.edu](http://www.iowalakes.edu) ◆Denoted courses appear in cumulative credit totals but do not count toward graduation requirements.

Synonym	Course/Section	Title	Credit	Start Time	End Time	Days	Room	Course types	Last Name	Start Date	End Date
<b>FOREIGN LANGUAGE - SPANISH</b>											
0008941	FLS-142-201	Elementary Spanish II	4.00	02:00PM	02:55PM	M T W R	510	ILTV	Nichols	1/9/2007	5/11/2007
0010036	FLS-142-51	Elementary Spanish II	4.00	06:00PM	07:55PM	T R	ICN	High School	Nichols	1/9/2007	5/11/2007
<b>GEOGRAPHY</b>											
0008706	GEO-121-11	World Regional Geography	3.00				230	S CTR	Peltz	1/9/2007	5/11/2007
0009095	GEO-121-201	World Regional Geography	3.00	11:30AM	12:25PM	T R	510	HYBRD ILTV	Hackenmiller	1/9/2007	5/11/2007
0008104	GEO-121-71	World Regional Geography	3.00					CBCIP	Hackenmiller	1/9/2007	5/11/2007
<b>HEALTH SCIENCES</b>											
0009230	HSC-114-100	*Medical Terminology	3.00	08:00AM	04:30PM	W R F			Olson	12/27/2006	1/8/2007
0008690	HSC-114-11	Medical Terminology	3.00				230	S CTR	Peltz	1/9/2007	5/11/2007
0008697	HSC-186-100	Human Growth and Development	3.00	11:15AM	02:40PM	M			Peltz	1/9/2007	5/11/2007
0008696	HSC-187-100	Adult Growth and Development	1.00	11:15AM	02:40PM	M			Peltz	1/9/2007	5/11/2007
		*Fast Track: 12/27/06-01/08/07 on-line - classroom 12/27, 28, 29									
<b>HISTORY</b>											
0008535	HIS-111-201	Western Civ: Modern to Present	3.00	09:00AM	09:55AM	M W F	715	ILTV	Hackenmiller	1/9/2007	5/11/2007
0008705	HIS-151-11	American History to 1877	3.00				230	S CTR	Peltz	1/9/2007	5/11/2007
0008059	HIS-151-71	American History to 1877	3.00					CBCIP	Bomgaars	1/9/2007	5/11/2007
0009076	HIS-152-201	American History Since 1877	3.00	06:00PM	09:00PM	W	715	ILTV	McLaughlin	1/9/2007	5/11/2007
0008109	HIS-152-71	American History Since 1877	3.00					CBCIP	Bomgaars	1/9/2007	5/11/2007
<b>HOSPITALITY, CULINARY AND MANAGEMENT</b>											
0008513	HCM-141-100	Food Production	5.00	09:00AM	01:25PM	T R	745		Halverson	1/9/2007	5/11/2007
0008517	HCM-208-100	Food Lab 3	2.00	08:00AM	09:50AM	T R			Halverson	1/9/2007	5/11/2007
0008518	HCM-209-100	Food Lab 4	2.00	08:00AM	09:50AM	M W F			Halverson	1/9/2007	5/11/2007
0008523	HCM-265-100	Mathematics for Hospitality	3.00	10:00AM	10:55AM	M W F	745		Erickson	1/9/2007	5/11/2007
0008520	HCM-310-100	Hospitality Law/Security	3.00	08:00AM	08:55AM	M W F	735		Halverson	1/9/2007	5/11/2007
0008514	HCM-450-100	Job Seeking Skills I	2.00	01:00PM	01:55PM	M W	735		Halverson	1/9/2007	5/11/2007
0009731	HCM-450-101	Job Seeking Skills I	2.00	08:00AM	08:55AM	T R			Petersen	1/9/2007	5/11/2007
0009738	HCM-451-100	Job Seeking Skills II	2.00	09:00AM	09:55AM	M W			Halverson	1/9/2007	5/11/2007
0009012	HCM-591-100	Housekeeping Management	3.00	09:00AM	09:55AM	M T W R F	5113		Foxhoven	1/9/2007	5/11/2007
0008525	HCM-592-100	Convention Management/Services	3.00	08:00AM	09:55AM	T	745		Erickson	1/9/2007	5/11/2007
				08:00AM	08:55AM	R	735		Erickson	1/9/2007	5/11/2007
0008526	HCM-594-101	Food & Beverage Management	4.00	09:00AM	10:50AM	R	735		Erickson	1/9/2007	5/11/2007
				10:00AM	12:55PM	T	745		Erickson	1/9/2007	5/11/2007
0008524	HCM-595-100	Front Office Operations/Night Audit	4.00	01:00PM	01:55PM	F	330		Erickson	1/9/2007	5/11/2007
0008524	HCM-595-100	Front Office Operations/Night Audit	4.00	08:00AM	08:55AM	M W F	745		Erickson	1/9/2007	5/11/2007
0008515	HCM-707-100	Hospitality Club Activities II	1.00	01:30PM	01:55PM	T R	745		Halverson	1/9/2007	5/11/2007
0008527	HCM-711-100	Hospitality Club Activities	1.00	11:00AM	11:55AM	R	735		Erickson	1/9/2007	5/11/2007
0008516	HCM-938-100	On-The-Job Training	5.00						Halverson	1/9/2007	5/11/2007
0009013	HCM-938-101	*On-The-Job Training	5.00				5113		Foxhoven	1/9/2007	5/11/2007
		*For SAVE students only									
<b>LITERATURE</b>											
0008084	LIT-101-71	Introduction to Literature	3.00					CBCIP	Devereaux	1/9/2007	5/11/2007
0008695	LIT-111-11	American Literature Since Mid-1800's	3.00				230	S CTR	Peltz	1/9/2007	5/11/2007
0008794	LIT-111-201	American Literature Since Mid-1800's	3.00	11:00AM	11:55AM	M W F	715	ILTV	Schoenewe	1/9/2007	5/11/2007

0008069	LIT-124-71	American Poetry	3.00						CBCIP	Devereaux	1/9/2007	5/11/2007
<b>MANAGEMENT</b>												
0008521	MGT-101-102	Principles of Management	3.00	11:00AM	11:55AM	M W F	735			Halverson	1/9/2007	5/11/2007
0008406	MGT-101-201	Principles of Management	3.00	11:30AM	12:55PM	T R	715	ILTV		Anderson	1/9/2007	5/11/2007
0008551	MGT-131-100	Principles of Supervision	4.00	09:00AM	10:50AM	T R	515			Reimer	1/9/2007	5/11/2007
<b>MARKETING</b>												
0008553	MKT-110-201	Principles of Marketing	3.00	10:00AM	10:55AM	M W F	510	ILTV		Reimer	1/9/2007	5/11/2007
0009105	MKT-140-201	Principles of Selling	3.00	03:00PM	04:25PM	M W	715	ILTV		Reimer	1/9/2007	5/11/2007
0008558	MKT-150-100	Principles of Advertising	3.00	01:00PM	01:55PM	M W F	515			Reimer	1/9/2007	5/11/2007
0008552	MKT-162-100	Retail Merchandising	3.00	08:00AM	08:55AM	M W F	515			Reimer	1/9/2007	5/11/2007
0008547	MKT-291-100	Professionalism II: Dex/Deca	1.00				515			Reimer	1/9/2007	5/11/2007
0008548	MKT-293-100	Professionalism IV: Dex/Deca	1.00				515			Reimer	1/9/2007	5/11/2007
0008549	MKT-938-100	On-The-Job Training	2.00							Reimer	1/9/2007	5/11/2007

## CASINO MANAGEMENT

- |   |   |
|---|---|
| <ul style="list-style-type: none"> <li>♣ Management</li> <li>♣ Surveillance</li> <li>♥ Facilities Management</li> </ul> | <ul style="list-style-type: none"> <li>♦ Accounting/Financial Management</li> <li>⊙ Cage Operation</li> <li>● Food/Beverage Management</li> </ul> |
|---|---|



# EMMETSBURG CAMPUS

Please watch our WEB SITE for updates: [www.iowalakes.edu](http://www.iowalakes.edu) ♦ Denoted courses appear in cumulative credit totals but do not count toward graduation requirements.

Synonym	Course/Section	Title	Credit	Start Time	End Time	Days	Room	Course types	Last Name	Start Date	End Date	
<b>MATHEMATICS</b>												
0008699	MAT-004-11	♦ Mathematics Foundations	1.00				230	S CTR	Peltz	1/9/2007	5/11/2007	
0008698	MAT-005-11	♦ Math Refresher	1.00				230	S CTR	Peltz	1/9/2007	5/11/2007	
0008700	MAT-015-11	♦ Metric System	1.00				230	S CTR	Peltz	1/9/2007	5/11/2007	
0008708	MAT-050-100	♦ Math Improvement	1.00	10:00AM	10:55AM	T R	420		Ellerbusch	1/9/2007	5/11/2007	
0008709	MAT-050-11	♦ Math Improvement	1.00				230	S CTR	Ellerbusch	1/9/2007	5/11/2007	
0008701	MAT-100-11	Elementary Algebra	3.00				230	S CTR	Peltz	1/9/2007	5/11/2007	
0009100	MAT-101-201	Intermediate Algebra	3.00	12:30PM	01:55PM	T R	510	ILTV	Schendel	1/9/2007	5/11/2007	
0008244	MAT-110-100	Math for Liberal Arts	3.00	11:00AM	11:55AM	M W F	520		Kadow	1/9/2007	5/11/2007	
0008834	MAT-110-201	Math for Liberal Arts	3.00	08:30AM	09:55AM	T R	715	ILTV	Schendel	1/9/2007	5/11/2007	
0008246	MAT-127-201	College Algebra & Trigonometry	5.00	01:00PM	01:55PM	M T W R F	715	ILTV	Kadow	1/9/2007	5/11/2007	
0008251	MAT-140-100	Finite Math	3.00	09:00AM	09:55AM	M W F	520		Kadow	1/9/2007	5/11/2007	
0008846	MAT-140-201	Finite Math	3.00	04:30PM	05:55PM	M W	510	ILTV	Cuttel	1/9/2007	5/11/2007	
0008243	MAT-157-100	Statistics	4.00	08:00AM	09:50AM	T R	520		Kadow	1/9/2007	5/11/2007	
0009080	MAT-157-201	Statistics	4.00	06:00PM	10:00PM	R	715	ILTV	Burrow	1/9/2007	5/11/2007	
0008824	MAT-217-201	Calculus II	5.00	10:00AM	10:55AM	M T W R F	818	ICN	Peterson	1/9/2007	5/11/2007	
0008217	MAT-770-100	Applied Math	2.00	02:30PM	03:25PM	T R	105		Menning	1/9/2007	5/11/2007	
0008295	MAT-785-100	Agricultural Math	2.00	08:00AM	09:50AM	T R	3208		Fehr	1/9/2007	5/11/2007	
0010163	MAT-785-101	*Agricultural Math	2.00	02:00PM	03:15PM	T W R			Ellerbusch	1/9/2007	3/1/2007	
		*For Agribusiness students										
<b>MARINE AND SMALL ENGINE TECHNOLOGY</b>												
0009150	MSE-158-100	Snowmobile Systems	2.00	07:30AM	11:25AM	M T W R	3102		Brichta	1/9/2007	1/30/2007	
0009147	MSE-164-100	Marine Engine 2 & 4 Stroke	2.00	07:30AM	11:25AM	M T W R	3102		Brichta	1/31/2007	2/13/2007	
0009148	MSE-165-100	Marine Engine 2 & 4 Stroke Lab	2.00	07:30AM	11:25AM	M T W R	3102		Brichta	2/14/2007	3/18/2007	
0009151	MSE-169-100	Marine Dr Systems T/L	3.00	12:30PM	02:25PM	M T W R	3102		Brichta	1/9/2007	2/8/2007	
0009152	MSE-173-100	Marine Fuel Systems	3.00	07:30AM	11:25AM	M T W R	3102		Brichta	4/16/2007	5/10/2007	
0009149	MSE-189-100	Marine Electrical Systems T/L	3.00	07:30AM	11:25AM	M T W R	3102		Brichta	3/19/2007	4/12/2007	
<b>MOTORCYCLE TECHNOLOGY</b>												
0009153	MOT-128-100	Motorcycle Engine 2&4 Stroke	2.00	07:15AM	09:25AM	M	3105		Hiney	1/9/2007	5/11/2007	
0009154	MOT-129-100	Motorcycle Eng 2&4 Stroke Lab	2.00	09:30AM	11:25AM	M	3105		Hiney	1/9/2007	5/11/2007	
				12:30PM	01:25PM	W	3105		Hiney	1/9/2007	5/11/2007	
				12:30PM	01:55PM	M	3105		Hiney	1/9/2007	5/11/2007	
0009158	MOT-139-100	Motorcycle Fuel Systems	3.00	07:30AM	09:25AM	R	3105		Hiney	1/9/2007	5/11/2007	
				12:30PM	03:30PM	R	3105		Hiney	1/9/2007	5/11/2007	
0009157	MOT-143-100	Dr Systems/Chassis/Suspension	3.00	07:30AM	11:30AM	W	3102		Hiney	1/9/2007	5/11/2007	
0009156	MOT-146-100	Ignition/Electrical Systems	3.00	07:30AM	09:25AM	T	3105		Hiney	1/9/2007	5/11/2007	
				12:30PM	03:15PM	T	3105		Hiney	1/9/2007	5/11/2007	
0009164	MOT-220-100	Adv Elect Diag/Troubleshooting	3.00	08:30AM	09:55AM	M T W R	3102		Bohl	1/9/2007	5/11/2007	
0009161	MOT-230-100	Advanced Fuel Systems	3.00	12:00PM	01:10PM	M W	3102		Bohl	1/9/2007	5/11/2007	
				12:00PM	01:55PM	T R	3102		Bohl	1/9/2007	5/11/2007	
0009159	MOT-250-100	Outdoor Power Equipment	3.00	01:15PM	03:30PM	M W	3102		Bohl	1/9/2007	5/11/2007	
0009162	MOT-255-100	Performance Engine Tuning	2.00	07:30AM	08:25AM	M T W R	3102		Bohl	1/9/2007	5/11/2007	
0009155	MOT-270-100	Introduction to Diesel	2.00	02:00PM	03:30PM	M W	3105		Bredeson	1/9/2007	5/11/2007	
				02:00PM	03:30PM	T R	3102		Bredeson	1/9/2007	5/11/2007	

PARTS DISTRIBUTION, AND INVENTORY CONTROL												
0008559	PAR-124-100	Inventory Control + Lab	3.00					515		Reimer	1/9/2007	5/11/2007
PHILOSOPHY												
0008307	PHI-101-201	Introduction to Philosophy	3.00	12:00PM	12:55PM	M W		715	HYBRD ILTV	Dingel	1/9/2007	5/11/2007
0008089	PHI-101-71	Introduction to Philosophy	3.00						CBCIP	Dingel	1/9/2007	5/11/2007
0009027	PHI-105-101	*Introduction to Ethics	3.00	08:00AM	04:30PM	W F			HYBRD	Tedesco	12/22/2006	1/8/2007
0008074	PHI-105-71	Introduction to Ethics	3.00						CBCIP	Dingel	1/9/2007	5/11/2007
0010338	PHI-105-201	Introduction to Ethics	3.00	06:00PM	09:00PM	W		510	ILTV	Staff	1/9/2007	5/11/2007
		*Fast Track: 12/22-1/8 - Classroom 12/22, 27, 29										
PHYSICAL EDUCATION ACTIVITES												
0009750	PEA-137-100	Lifeguard Training I	1.00	08:00AM	05:00PM	W R F				Laubenthal	12/27/2006	12/30/2006
				09:00AM	02:00PM	S				Laubenthal	12/27/2006	12/30/2006
0009751	PEA-137-101	Lifeguard Training I	1.00	04:30PM	09:00PM	W				Laubenthal	4/4/2007	4/7/2007
				08:00AM	06:00PM	R				Laubenthal	4/4/2007	4/7/2007
				08:00AM	06:00PM	F				Laubenthal	4/4/2007	4/7/2007
				08:00AM	04:00PM	S				Laubenthal	4/4/2007	4/7/2007
0009759	PEA-137-102	Lifeguard Training I	1.00	01:00PM	08:00PM	SU				Laubenthal	4/20/2007	4/28/2007
				04:30PM	09:00PM	F				Laubenthal	4/20/2007	4/28/2007
				04:30PM	09:00PM	F				Laubenthal	4/20/2007	4/28/2007
				08:00AM	04:00PM	S				Laubenthal	4/20/2007	4/28/2007

## EMMETSBURG CAMPUS

Please watch our WEB SITE for updates: [www.iowalakes.edu](http://www.iowalakes.edu) ♦Denoted courses appear in cumulative credit totals but do not count toward graduation requirements.

Synonym	Course/Section	Title	Credit	Start Time	End Time	Days	Room	Course types	Last Name	Start Date	End Date
PHYSICAL EDUCATION - COACHING OFFICIATING											
0008965	PEC-110-51	Coaching Ethics, Tech, & Theory	1.00	04:30PM	09:45PM	W	818	ICN	Hale	1/10/2007	1/24/2007
0008970	PEC-115-51	Athletic Development & Human Growth	1.00	04:30PM	09:45PM	W	818	ICN	Hale	2/21/2007	3/7/2007
0008975	PEC-120-51	Body Structure & Function	1.00	04:30PM	09:45PM	W	818	ICN	Hale	1/31/2007	2/14/2007
0008980	PEC-126-51	Athletic Injury Prevention	2.00	04:30PM	09:45PM	W	818	ICN	Hale	3/21/2007	4/25/2007
PHYSICAL EDUCATION AND HEALTH - GENERAL											
0008099	PEH-102-71	Health	3.00					CBCIP	Steele	1/9/2007	5/11/2007
POLITICAL SCIENCE											
0009682	POL-111-100	American National Government	3.00	02:00PM	03:25PM	T R	520		Hackenmiller	1/9/2007	5/11/2007
0008704	POL-111-11	American National Government	3.00				230	S CTR	Peltz	1/9/2007	5/11/2007
0008043	POL-111-71	American National Government	3.00					CBCIP	Bomgaars	1/9/2007	5/11/2007
PRACTICAL NURSING											
0009477	PNN-101-100	Mathematics for Health Profess	1.00	08:00AM	08:55AM	F	502		Egland	1/12/2007	3/8/2007
				11:00AM	11:55AM	R	502		Egland	1/12/2007	3/8/2007
0009478	PNN-101-101	*Mathematics for Health Profess	1.00	08:00AM	08:55AM	F	502	HYBRD	Egland	3/22/2007	4/20/2007
				11:00AM	11:55AM	R	502	HYBRD	Egland	3/22/2007	4/20/2007
0008707	PNN-101-11	Mathematics for Health Profess	1.00				230	S CTR	Peltz	1/9/2007	5/11/2007
0009479	PNN-101-201	Mathematics for Health Profess	1.00	04:30PM	05:55PM	T R	715	ILTV	Staff	1/9/2007	2/20/2007
0009316	PNN-108-31	Survival Spanish for Nursing	2.00	06:00PM	08:00PM	R			Nichols	1/9/2007	5/11/2007
0009484	PNN-141-100	Fundamentals of Nursing Skills Lab	4.00	08:00AM	10:55AM	T	502		Egland	1/9/2007	2/27/2007
				08:00AM	10:55AM	W	502		Egland	1/9/2007	2/28/2007
				12:00PM	03:00PM	T	502		Egland	1/9/2007	2/27/2007
				12:00PM	03:00PM	W	502		Egland	1/9/2007	2/28/2007
				12:30PM	03:30PM	R	502		Egland	1/9/2007	2/27/2007
				12:30PM	03:30PM	F	502		Egland	1/9/2007	2/27/2007
0009486	PNN-271-100		1.00	03:00PM	06:20PM	M	540		Olson	1/11/2007	5/11/2007
0009229	PNN-275-100	**Normal Nutrition	3.00	08:00AM	04:30PM	M T W			Olson	12/27/2006	1/22/2007
0009889	PNN-275-103	Normal Nutrition	3.00	03:00PM	06:20PM	M			Olson	1/22/2007	5/7/2007
0009492	PNN-345-100	Dimensions in Practical Nursing	2.00	08:00AM	03:00PM	W R	410		Baack	1/9/2007	1/11/2007
				08:00AM	03:00PM	M	410		Baack	1/29/2007	2/19/2007
				08:00AM	12:00PM	T	410		Baack	2/20/2007	2/20/2007
0009487	PNN-421-100	Maternal & Newborn Nursing	2.00	08:00AM	09:55AM	W	502		Stover	1/10/2007	2/28/2007
				08:00AM	10:55AM	M	502		Stover	1/10/2007	2/28/2007
0009488	PNN-421-101	***Maternal & Newborn Nursing	2.00	10:00AM	11:55AM	W	502		Stover	1/10/2007	2/26/2007
				12:00PM	03:00PM	M	502		Stover	1/9/2007	2/26/2007
0009489	PNN-631-100	Adult & Child Health Nursing	9.00	01:00PM	03:00PM	T W	500		Olson	1/9/2007	5/9/2007
				08:00AM	10:55AM	R	500		Olson	1/9/2007	1/25/2007
				08:00AM	10:55AM	F	500		Olson	1/12/2007	1/26/2007
				12:00PM	02:30PM	F	500		Olson	1/12/2007	1/26/2007
				10:00AM	11:55AM	T	500		Olson	1/9/2007	5/9/2007
				10:00AM	11:55AM	W	500		Olson	3/7/2007	5/2/2007

				12:00PM	03:00PM	R	500		Olson	1/9/2007	1/25/2007
				12:00PM	03:00PM	M	500		Olson	3/5/2007	5/07/07
<b>PRACTICAL NURSING (CONTINUED)</b>											
0009490	PNN-631-101	Adult & Child Health Nursing	9.00	01:00PM	03:00PM	T W	500		Rochleau	1/9/2007	5/9/2007
				12:00PM	3:00PM	M	500		Rochleau	3/5/2007	5/7/2007
				08:00AM	10:55AM	R	500		Rochleau	1/9/2007	1/25/2007
				08:00AM	11:55AM	F	500		Rochleau	1/9/2007	1/26/2007
				10:00AM	11:55AM	T	500		Rochleau	1/9/2007	5/9/2007
				10:00AM	11:55AM	W	500		Rochleau	3/7/2007	5/9/2007
				12:00PM	03:00PM	R	500		Rochleau	1/9/2007	1/25/2007
0009491	PNN-632-100	Nurs Care-Lifespan Clinical	3.00	06:30AM	01:00PM	R F			Olson	2/1/2007	4/5/2007
				06:30AM	03:00PM	R F			Olson	4/12/2007	4/27/2007
0009493	PNN-721-100	Dimensions of Practical Nursing Clinical	3.00	06:00AM	02:30PM	T W R			Palmer	1/30/2007	2/15/2007
				06:30AM	03:00PM	T W R F			Palmer	1/16/2007	1/19/2007
				06:30AM	03:00PM	M T R F			Palmer	1/22/2007	1/26/2007
0009485	PNN-722-100	#Fundamentals of Nursing Clinical	2.00	06:30AM	01:00PM	T W			Egland	3/6/2007	5/2/2007
		*Only for students repeating PNN-101									
		**Fast Track: 1/02-1/22 online - Classroom 1/2, 3, 15									
		***For students enrolled in A & P II									
		#Students in this rotation may be in Clinical 1-7:30p.m.									

## EMMETSBURG CAMPUS

Please watch our WEB SITE for updates: [www.iowalakes.edu](http://www.iowalakes.edu) ♦Denoted courses appear in cumulative credit totals but do not count toward graduation requirements.

Synonym	Course/Section	Title	Credit	Start Time	End Time	Days	Room	Course types	Last Name	Start Date	End Date
<b>PSYCHOLOGY</b>											
0008316	PSY-111-101	Introduction to Psychology	3.00	12:00PM	12:55PM	M W F	520		Skelly	1/9/2007	5/11/2007
0008702	PSY-111-11	Introduction to Psychology	3.00				230	S CTR	Peltz	1/9/2007	5/11/2007
0008322	PSY-111-201	Introduction to Psychology	3.00	11:00AM	11:55AM	M W F	510	ILTV	Weipert	1/9/2007	5/11/2007
0009090	PSY-111-211	Introduction to Psychology	3.00	07:30AM	08:25AM	M W F	510	ILTV	Christensen	1/9/2007	5/11/2007
0009115	PSY-111-221	Introduction to Psychology	3.00	06:00PM	09:00PM	T	510	ILTV	Gilbert	1/9/2007	5/11/2007
0008079	PSY-111-71	Introduction to Psychology	3.00					CBCIP	Harmon	1/9/2007	5/11/2007
0008054	PSY-223-71	Child & Adolescent Psychology	3.00					CBCIP	Davis	1/9/2007	5/11/2007
0008037	PSY-241-71	Abnormal Psychology	3.00					CBCIP	Davis	1/9/2007	5/11/2007
<b>READING</b>											
0008710	RDG-030-11	♦Introduction to College Reading I	1.00				230	S CTR	Neary	1/9/2007	5/11/2007
0008716	RDG-031-11	♦Introduction to College Reading II	1.00				230	S CTR	Neary	1/9/2007	5/11/2007
0008715	RDG-120-11	College Reading	1.00				230	S CTR	Neary	1/9/2007	5/11/2007
<b>SOCIOLOGY</b>											
0008703	SOC-110-11	Introduction to Sociology	3.00				230	S CTR	Peltz	1/9/2007	5/11/2007
0008114	SOC-110-71	Introduction to Sociology	3.00					CBCIP	Helmers	1/9/2006	5/11/2007
0008318	SOC-115-100	Social Problems	3.00	01:00PM	01:55PM	M W	520	HYBRD	Skelly	1/9/2007	5/11/2007
0008320	SOC-120-101	Marriage and Family	3.00	10:00AM	10:55AM	M W F	735		Skelly	1/9/2007	5/11/2007
0009028	SOC-120-102	*Marriage and Family	3.00	08:00AM	04:30PM	W F		HYBRD	Tedesco	12/22/2006	1/8/2007
0008094	SOC-120-71	Marriage and Family	3.00					CBCIP	Helmers	1/9/2007	5/11/2007
0010100	SOC-890-100	Service Learning	1.00						Jones	1/9/2007	5/11/2007
		*Fast Track: 12/22-1/8, Classroom 12/22, 27, 29									
<b>SPECIAL NEEDS</b>											
0009014	SN-203S-100	*Housekeeping Operations	0.00	09:00AM	09:55AM	M T W R F	5113		Foxhoven	1/9/2007	5/11/2007
		*For SAVE students only									
<b>SPEECH</b>											
0008799	SPC-101-104	Fundamentals of Oral Comm	3.00	10:00AM	11:25AM	T R	533		Jedlicka	1/9/2007	5/11/2007
0008800	SPC-101-105	Fundamentals of Oral Comm	3.00	12:00PM	12:55PM	M W F	533		Jedlicka	1/9/2007	5/11/2007
0008801	SPC-101-106	Fundamentals of Oral Comm	3.00	09:00AM	09:55AM	M W F	533		Jedlicka	1/9/2007	5/11/2007
<b>STUDENT DEVELOPMENT</b>											
0008717	SDV-075-11	♦Strategies for Academic Succes	1.00				230	S CTR	Neary	1/9/2007	5/11/2007
0008226	SDV-090-100	College 101	0.00	08:00AM	04:00PM	T	435		Swanson	1/9/2007	1/9/2007
0008684	SDV-090-201	College 101	0.00	05:45PM	08:00PM	M	510		Mohani	1/8/2007	1/8/2007
0008714	SDV-103-100	Successful Learning	1.00	01:00PM	01:55PM	W	420		Neary	1/9/2007	5/11/2007
0008713	SDV-103-11	Successful Learning	1.00				230	S CTR	Neary	1/9/2007	5/11/2007
0008694	SDV-106-11	Library Orientation	1.00				230	S CTR	Peltz	1/9/2007	5/11/2007
0008950	SDV-195-101	Student Government I	1.00						Lapczenski	1/9/2007	5/11/2007

WELDING												
0009309	WEL-179-100	Special Processes/Procedures	3.00					2104		Farnsworth	1/9/2007	5/11/2007
0009306	WEL-180-100	GMAW/GTAW	2.00					2104		Farnsworth	1/9/2007	5/11/2007
0009307	WEL-183-100	GMAW/GTAW	3.00					2104		Farnsworth	1/9/2007	5/11/2007
0009308	WEL-310-100	Pipe Welding	5.00					2104		Farnsworth	1/9/2007	5/11/2007
0009305	WEL-334-100	*Trade & Industry Welding	2.00					2104		Farnsworth	1/9/2007	5/11/2007
		*For Marine and Small Engine Students										

## Financial Aide

Iowa Lakes Community College offers financial assistance to students through state, federal and institutional scholarship programs. Assistance is available to students who demonstrate financial need as well as to students who show exceptional academic talent.

### WEB/ONLINE INFORMATION

For online financial aid information, go to [www.iowalakes.edu](http://www.iowalakes.edu). You'll find the following to help you determine how you'll pay for college.

- \*Financial aid form
- \*Financial Aid Handbook
- \*Student loan counseling
- \*Tuition estimator
- \*Scholarships available
- \*Loans and grants
- \*Online Stafford Loan application
- \*Online financial aid status
- \*Satisfactory academic progress standards

### FOR FURTHER INFORMATION CALL US!

At Emmetsburg:  
Toll free at 800-242-5108 ext. 276  
or 712-852-5276

At Estherville:  
Toll free at 800-242-5106 ext. 120  
or 712-362-7920

## ESTHERVILLE CAMPUS

Please watch our WEB SITE for updates: [www.iowalakes.edu](http://www.iowalakes.edu) ♦ Denoted courses appear in cumulative credit totals but do not count toward graduation requirements.

Synonym	Course/Section	Title	Credit	Start Time	End Time	Days	Room	Course types	Last Name	Start Date	End Date
<b>ACCOUNTING</b>											
0008620	ACC-131-12	Principles of Accounting I	4.00				6 S CTR		Dodge	1/9/2007	5/11/2007
0008493	ACC-132-100	Principles of Accounting II	4.00	12:00PM	01:50PM	T R	46		Berven	1/9/2007	5/11/2007
0008496	ACC-132-202	Principles of Accounting II	4.00	08:30AM	09:55AM	M W	24	ILTV	Berven	1/9/2007	5/11/2007
				09:00AM	09:55AM	F	24	ILTV	Berven	1/9/2007	5/11/2007
0008501	ACC-232-202	Intermediate Accounting II	4.00	09:00AM	09:55AM	T R	24	HYBRD ILTV	Berven	1/9/2007	5/11/2007
				12:00PM	12:55PM	F	52	HYBRD ILTV	Berven	1/9/2007	5/11/2007
0009061	ACC-261-202	Income Tax Accounting	3.00	02:00PM	03:25PM	T R	52	ILTV	Grimm	1/9/2007	5/11/2007
0008473	ACC-311-100	Computer Accounting	3.00	10:00AM	11:25AM	T R	51		Hurley	1/9/2007	5/11/2007
0008505	ACC-941-100	Practicum	3.00						Berven	1/9/2007	5/11/2007
<b>ADMINISTRATIVE ASSISTANT</b>											
0008719	ADM-106-12	Introduction to Keyboarding	2.00				6 S CTR		Dodge	1/9/2007	5/11/2007
0008474	ADM-255-100	Business Professionalism II	1.00	02:00PM	02:55PM	M	51		Hurley	1/9/2007	5/11/2007
0008475	ADM-255-101	Business Professionalism II	0.00	02:00PM	02:55PM	M	51		Hurley	1/9/2007	5/11/2007
0008477	ADM-355-100	Business Professionalism IV	1.00	02:00PM	02:55PM	M	51		Hurley	1/9/2007	5/11/2007
0008476	ADM-355-101	Business Professionalism IV	0.00	02:00PM	02:55PM	M	51		Hurley	1/9/2007	5/11/2007
<b>ANTHROPOLOGY</b>											
0008049	ANT-105-72	Cultural Anthropology	3.00					CBCIP	Tigges	1/9/2007	5/11/2007
<b>ART</b>											
0008749	ART-101-100	Art Appreciation	3.00	09:00AM	09:55AM	M W F	112		Lindell	1/9/2007	5/11/2007
0008751	ART-101-202	Art Appreciation	3.00	10:00AM	11:25AM	T R	24	ILTV	Lindell	1/9/2007	5/11/2007
0008908	ART-127-100	Digital Illustration	3.00	09:00AM	09:55AM	M W F	109		Wilson	1/9/2007	5/11/2007
0008755	ART-133-100	Drawing	3.00	01:00PM	02:50PM	M W F	111		Lindell	1/9/2007	5/11/2007
0008756	ART-134-100	Drawing II	3.00	01:00PM	02:50PM	M W F	111		Lindell	1/9/2007	5/11/2007
0008757	ART-143-100	Painting	3.00	01:00PM	03:45PM	T R	111		Lindell	1/9/2007	5/11/2007
0008758	ART-144-100	Painting II	3.00	01:00PM	03:45PM	T R	111		Lindell	1/9/2007	5/11/2007
0008759	ART-173-100	Ceramics	3.00				111		Lindell	1/9/2007	5/11/2007
0008760	ART-174-100	Ceramics II	3.00				111		Lindell	1/9/2007	5/11/2007
0008065	ART-206-72	Art History	3.00					CBCIP	Kattner	1/9/2007	5/11/2007
0008957	ART-286-100	Photography: Portraiture	3.00	10:00AM	10:55AM	M W F	109		Petrick	1/9/2007	5/11/2007
<b>AVIATION</b>											
0008371	AVI-129-100	Employ Prep Aviation Careers	1.00	06:00PM	07:50PM	M W	29		Hall	1/9/2007	5/11/2007
0008367	AVI-140-100	Private Pilot Ground School	4.00	01:00PM	01:55PM	M T W F	72		Hall	1/9/2007	5/11/2007
0008366	AVI-180-100	Private Pilot Flight Lab I	3.00						Hall	1/9/2007	5/11/2007

0008387	AVI-212-100	Instrument Ground School	4.00	11:00AM	12:50PM	T R	72		Duer	1/9/2007	5/11/2007
0008368	AVI-245-100	Comm/Instr Cross Ctry Flt Lab	3.00						Hall	1/9/2007	5/11/2007
0008384	AVI-245-101	Comm/Instr Cross Ctry Flt Lab	3.00						Duer	1/9/2007	5/11/2007
0008386	AVI-246-100	Commercial/Instrum Flight Lab	3.00						Duer	1/9/2007	5/11/2007
0008369	AVI-261-100	Commercial Pilot Ground School	3.00	10:00AM	10:55AM	M W F	25		Hall	1/9/2007	5/11/2007
0008389	AVI-300-100	Flight Instr Ground School	3.00	10:00AM	10:55AM	M W F	100		Duer	1/9/2007	5/11/2007
0008390	AVI-301-100	Instrument Instructor	1.00						Duer	1/9/2007	5/11/2007
0008388	AVI-350-100	Flight Instructor Flight Lab	3.00						Hall	1/9/2007	5/11/2007
0008392	AVI-400-100	Multi-Engine Rating	1.00						Duer	1/9/2007	5/11/2007
0008391	AVI-405-100	Multi-Engine Rating	3.00						Duer	1/9/2007	5/11/2007
0008385	AVI-928-100	Aircraft Transition Training	1.00						Duer	1/9/2007	5/11/2007
0008370	AVI-941-100	Practicum	1.00						Hall	1/9/2007	5/11/2007
0008372	AVI-941-101	Practicum	3.00						Duer	1/9/2007	5/11/2007
0008373	AVI-941-102	Practicum	5.00						Hall	1/9/2007	5/11/2007
<b>BIOLOGY</b>											
0008585	BIO-105-100	Introductory Biology	4.00	02:00PM	03:50PM	M	107		Phillips	1/9/2007	5/11/2007
				10:00AM	10:55AM	M W F	107		Phillips	1/9/2007	5/11/2007
0009259	BIO-113-101	*General Biology II	4.00	11:00AM	11:55AM	M W F	16		Abbott	1/9/2007	5/11/2007
0009260	BIO-113-102	General Biology II	4.00	12:00PM	12:55PM	M W F	16		Abbott	1/9/2007	5/11/2007
0009261	BIO-113B-100	General Biology II Lab	0.00	12:00PM	01:50PM	T	28		Abbott	1/9/2007	5/11/2007
0009262	BIO-113B-101	General Biology II Lab	0.00	10:00AM	11:50AM	T	28		Abbott	1/9/2007	5/11/2007
0009822	BIO-113B-102	General Biology II Lab	0.00	10:00AM	11:50AM	R	28		Abbott	1/9/2007	5/11/2007
0009023	BIO-163-100	Essentials of Anatomy & Physiology	4.00	01:00PM	02:25PM	T R	16		Cornwall	1/9/2007	5/11/2007
				02:30PM	03:25PM	T R	28		Cornwall	1/9/2007	5/11/2007
0009298	BIO-174-202	**Human Anatomy & Physiology II	4.00	06:00PM	09:00PM	M	24	ILTV	Abbott	1/9/2007	5/11/2007
		*Must register for one lab BIO-113B-100, BIO-113B-101 or C812BIO-113B-102									
		**Must register for one lab - BIO-174B-100 or BIO-174B-101									

## ESTHERVILLE CAMPUS

Please watch our WEB SITE for updates: [www.iowalakes.edu](http://www.iowalakes.edu) ♦ Denoted courses appear in cumulative credit totals but do not count toward graduation requirements.

Synonym	Course/Section	Title	Credit	Start Time	End Time	Days	Room	Course types	Last Name	Start Date	End Date
<b>BUSINESS</b>											
0008509	BUS-115-202	Business Correspondence	2.00	01:00PM	01:55PM	F	24	HYBRD ILTV	Berven	1/9/2007	5/11/2007
0008400	BUS-161-100	Human Relations	3.00	01:30PM	02:55PM	T R	48		Anderson	1/9/2007	5/11/2007
0008404	BUS-183-100	Business Law	3.00	01:00PM	01:55PM	M W F	48		Anderson	1/9/2007	5/11/2007
0008833	BUS-211-101	Business Statistics	4.00	01:00PM	01:55PM	M T W	29	HYBRD	Bosch	1/9/2007	5/11/2007
0009081	BUS-211-202	Business Statistics	4.00	06:00PM	10:00PM	R	52	ILTV	Staff	1/9/2007	5/11/2007
0008424	BUS-250-100	Principles of Real Estate	3.00	02:00PM	02:55PM	M W F	106		Gruwell	1/9/2007	5/11/2007
0008402	BUS-932-100	Practicum	5.00						Anderson	1/9/2007	5/11/2007
0008403	BUS-932-101	Practicum	3.00						Anderson	1/9/2007	5/11/2007
<b>BUSINESS COMPUTER APPLICATIONS</b>											
0009988	BCA-217-101	Advanced Computer Applications	3	12:00PM	12:55PM	M W F	51		Hurley	1/9/2007	5/11/2007
<b>CHEMISTRY</b>											
0009132	CHM-151-202	*College Chemistry I	4.00	04:30PM	05:55PM	T R	24	ILTV	Torney	1/9/2007	5/11/2007
0010291	CHM-151-102	**College Chemistry I Lab		04:00PM	05:55PM	W	21		Klepper	1/9/2007	5/11/2007
0009114	CHM-152-100	College Chemistry II	4.00	10:00AM	10:55AM	M W F	29		Armstrong	1/9/2007	5/11/2007
				10:00AM	11:50AM	T	21		Armstrong	1/9/2007	5/11/2007
0009056	CHM-176-100	General Chemistry II	5.00	02:00PM	02:55PM	M W F	29	HYBRD	Klepper	1/9/2007	5/11/2007
				02:00PM	03:50PM	T R	21	HYBRD	Klepper	1/9/2007	5/11/2007
0009057	CHM-176-101	General Chemistry II	5.00	08:00AM	08:55AM	M W F	29	HYBRD	Klepper	1/9/2007	5/11/2007
				08:00AM	09:55AM	T R	21	HYBRD	Klepper	1/9/2007	5/11/2007
0009953	CHM-190-100	Introduction to Forensic Chemistry	4.00	10:00AM	10:55AM	M W F	21		Klepper	1/9/2007	5/11/2007
				10:00AM	11:50AM	R	21		Klepper	1/9/2007	5/11/2007
0009058	CHM-273-100	Organic Chemistry II	5.00	12:00PM	12:55PM	M W F	29		Klepper	1/9/2007	5/11/2007
				12:00PM	01:55PM	T R	21		Klepper	1/9/2007	5/11/2007
0009059	CHM-948-100	Special Projects	2.00				21		Klepper	1/9/2007	5/11/2007
		*Must register for one lab at either Estherville, Algona or Spencer									
		**Lab for CHM-151-202									
<b>COMPUTER PROGRAMMING</b>											
0009120	CIS-141-101	Computer Science	3.00	10:00AM	11:50AM	M W	44		Grimm	1/9/2007	5/11/2007
0008450	CIS-171-100	Java	3.00	09:00AM	10:50AM	T R	44		Whitener	1/9/2007	5/11/2007
0008449	CIS-612-100	Advanced Visual Basic	3.00	11:00AM	12:50PM	T R	44		Witte	1/9/2007	5/11/2007
0008448	CIS-941-100	Computer Science Practicum	5.00						Whitener	1/9/2007	5/11/2007

COMPUTER AIDED DRAFTING											
0008438	CAD-121-100	Computer Aided Drafting II	3.00	08:00AM	08:55AM	M	45		McCoy	1/9/2007	5/11/2007
				08:00AM	09:50AM	T R	45		McCoy	1/9/2007	5/11/2007
0008439	CAD-136-100	Technical Design	3.00	10:00AM	10:55AM	M T W R F	45		McCoy	1/9/2007	5/11/2007
0008441	CAD-141-100	Parametric Solid Modeling II	3.00	12:00PM	01:50PM	M W	45		McCoy	1/9/2007	5/11/2007
				12:00PM	12:55PM	F	45		McCoy	1/9/2007	5/11/2007
0008435	CAD-165-100	Rendering & Animation	3.00	08:00AM	09:50AM	W	45		McCoy	1/9/2007	5/11/2007
				09:00AM	09:55AM	M F	45		McCoy	1/9/2007	5/11/2007
0008440	CAD-901-100	CAD Practicum	5.00						McCoy	1/9/2007	5/11/2007
0008492	CAD-928-100	CAD Projects	2.00				45		McCoy	1/9/2007	5/11/2007
COMPUTER NETWORKING											
0009121	NET-140-100	Networking Essentials	4.00	01:00PM	02:50PM	M W	38		Grimm	1/9/2007	5/11/2007
COMPUTER SCIENCE											
0008478	CSC-110-102	Introduction to Computers	3.00	09:00AM	09:55AM	M W F	51		Hurley	1/9/2007	5/11/2007
0008479	CSC-110-103	Introduction to Computers	3.00	10:00AM	10:55AM	M W F	51		Hurley	1/9/2007	5/11/2007
0008480	CSC-110-104	Introduction to Computers	3.00	12:00PM	01:25PM	T R	51		Hurley	1/9/2007	5/11/2007
0008482	CSC-110-106	Introduction to Computers	3.00	08:30AM	09:55AM	T R	51		Hurley	1/9/2007	5/11/2007
CRIMINAL JUSTICE											
0008918	CRJ-110-100	Patrol Procedures	3.00	10:00AM	10:55AM	M W F	401		Leu	1/9/2007	5/11/2007
0008919	CRJ-110-101	Patrol Procedures	3.00	11:00AM	11:55AM	M W F	401		Leu	1/9/2007	5/11/2007
0008916	CRJ-116-100	Law Enforcement Seminar II	1.00	02:00PM	02:55PM	M	401		Leu	1/9/2007	5/11/2007
0008917	CRJ-116-101	Law Enforcement Seminar II	1.00	02:00PM	02:55PM	W	401		Leu	1/9/2007	5/11/2007
0008913	CRJ-117-100	Service Learning Project - LE	1.00	09:00AM	09:55AM	T	401		Leu	1/9/2007	5/11/2007
0008344	CRJ-120-100	Introduction to Corrections	3.00	11:00AM	11:55AM	M W F	402		Parker	1/9/2007	5/11/2007
0008347	CRJ-122-100	Corrections Seminar II	1.00	02:00PM	02:55PM	M	402		Parker	1/9/2007	5/11/2007
0008341	CRJ-123-100	Service Learning Project	1.00	09:00AM	09:55AM	T	402		Parker	1/9/2007	5/11/2007
0008425	CRJ-131-100	Criminal Law and Procedure	3.00	10:00AM	11:25AM	T R	106		Gruwell	1/9/2007	5/11/2007
0009291	CRJ-166-100	Introduction/Digital File System Forensik	3.00	01:00PM	02:50PM	T R	407		Whitener	1/9/2007	5/11/2007
0008342	CRJ-200-100	Criminology	3.00	09:00AM	09:55AM	M W F	402		Parker	1/9/2007	5/11/2007
0008343	CRJ-200-101	Criminology	3.00	08:00AM	08:55AM	M W F	402		Parker	1/9/2007	5/11/2007
0008349	CRJ-201-100	Juvenile Delinquency	3.00				402		Parker	1/9/2007	5/11/2007

## ESTHERVILLE CAMPUS

Please watch our WEB SITE for updates: [www.iowalakes.edu](http://www.iowalakes.edu) ♦ Denoted courses appear in cumulative credit totals but do not count toward graduation requirements.

Synonym	Course/Section	Title	Credit	Start Time	End Time	Days	Room	Course types	Last Name	Start Date	End Date
CRIMINAL JUSTICE (Continued)											
0008937	CRJ-214-100	Spanish for Prof: Law Enforcement	2.00	01:00PM	01:55PM	M W F	53		Nichols	1/9/2007	4/13/2007
0008938	CRJ-214-101	Spanish for Prof: Law Enforcement	2.00	11:00AM	11:55AM	M W F	55		Nichols	1/9/2007	4/13/2007
0008920	CRJ-218-100	Field Experience I - Law Enfor	2.00	03:00PM	04:50PM	M	401		Staff	1/9/2007	5/11/2007
0008921	CRJ-218-101	Field Experience I - Law Enfor	2.00	10:00AM	11:50AM	T	401		Staff	1/9/2007	5/11/2007
0008346	CRJ-220-100	Community-Based Corrections	3.00	02:00PM	04:55PM	W	402		Parker	1/9/2007	5/11/2007
0008348	CRJ-225-100	Field Experience I-Corrections	2.00	01:00PM	02:50PM	R	402		Parker	1/9/2007	5/11/2007
0008350	CRJ-226-100	Field Experience II - Corrections	3.00	01:00PM	03:55PM	T	402		Parker	1/9/2007	5/11/2007
0008914	CRJ-250-100	Firearms	1.00	02:00PM	03:50PM	T	401		Staff	1/9/2007	5/11/2007
0008915	CRJ-250-101	Firearms	1.00	10:00AM	11:50AM	R	401		Staff	1/9/2007	5/11/2007
0008445	CRJ-271-100	Internet Criminal Investigations	3.00	01:00PM	02:25PM	M W	407		Whitener	1/9/2007	5/11/2007
0008446	CRJ-272-100	Forensics Computer Science II	3.00	08:00AM	09:50AM	M W	407		Whitener	1/9/2007	5/11/2007
0008345	CRJ-920-100	Field Experience	5.00	01:00PM	03:55PM	T	402		Parker	1/9/2007	5/11/2007
0008922	CRJ-920-101	Field Experience	5.00						Staff	1/9/2007	5/11/2007
DISABILITY SERVICES											
0008596	DSV-160-100	Counseling Skills	4.00	12:00PM	01:50PM	M W	108		Ver Mulm	1/9/2007	5/11/2007
0008595	DSV-932-100	Internship Hum Serv/Disab Study	2.00						Ver Mulm	1/9/2007	5/11/2007
0008597	DSV-941-100	Practicum Hum Serv/Disab Study	6.00						Ver Mulm	1/9/2007	5/11/2007
0008598	DSV-941-100	Practicum Hum Serv/Disab Study	4.00						Ver Mulm	1/9/2007	5/11/2007
ECONOMICS											
0008462	ECN-120-202	Principles of Macroeconomics	3.00	10:00AM	10:55AM	M W F	52	ILTV	Wimmer	1/9/2007	5/11/2007
0009128	ECN-120-212	Principles of Macroeconomics	3.00	06:00PM	09:00PM	R	24	ILTV	Wimmer	1/9/2007	5/11/2007
0008466	ECN-130-100	Principles of Microeconomics	3.00	12:00PM	12:55PM	M W F	48		Wimmer	1/9/2007	5/11/2007
0008468	ECN-130-202	Principles of Microeconomics	3.00	10:00AM	11:25AM	T R	52	ILTV	Wimmer	1/9/2007	5/11/2007
EDUCATION											
0008590	EDU-215-202	*Introduction to Education	3.00	03:00PM	04:25PM	T R	24	ILTV	Ver Mulm	1/9/2007	5/11/2007
0008600	EDU-217-100	**Introduction to Education	1.00						Ver Mulm	1/9/2007	5/11/2007
0008782	EDU-235-202	Children's Literature	3.00	12:00PM	12:55PM	M W F	24	ILTV	Barr/Bunt	1/9/2007	5/11/2007

		*Must take EDU-217 Introduction to Education Lab									
		**Students must register for EDU-215 Introduction to Education									
<b>ENGLISH COMPOSITION</b>											
0008746	ENG-028-101	◆Writing Strategies	2.00	09:00AM	09:55AM	T R	72		Neill	1/9/2007	5/11/2007
0008747	ENG-028-102	◆Writing Strategies	2.00	09:00AM	09:55AM	M W	72		Neill	1/9/2007	5/11/2007
0008722	ENG-028-12	◆Writing Strategies	2.00				6	S CTR	Dodge	1/9/2007	5/11/2007
0008724	ENG-062-12	◆Introduction to College Writing	2.00				6	S CTR	Dodge	1/9/2007	5/11/2007
0008786	ENG-105-100	Composition I	3.00	10:00AM	11:25AM	T R	100		McDonald	1/9/2007	5/11/2007
0008787	ENG-105-101	Composition I	3.00	09:00AM	09:55AM	M W F	100		McDonald	1/9/2007	5/11/2007
0008788	ENG-105-102	Composition I	3.00	01:00PM	01:55PM	M W F	100		McDonald	1/9/2007	5/11/2007
0009496	ENG-105-105	Composition I	3.00	12:00PM	01:25PM	T R	25		Devereaux	1/11/2007	5/11/2007
0009497	ENG-105-106	Composition I	3.00	11:00AM	11:05AM	M W F	46		Devereaux	1/11/2007	5/11/2007
0008803	ENG-105-202	Composition I	3.00	01:00PM	01:55PM	M W	24	HYBRD ILTV	Naber	1/9/2007	5/11/2007
0008789	ENG-106-100	Composition II	3.00	11:00AM	11:55AM	M W F	100		McDonald	1/9/2007	5/11/2007
0008790	ENG-106-101	Composition II	3.00	12:00PM	01:25PM	T R	100		McDonald	1/9/2007	5/11/2007
0009498	ENG-106-103	Composition II	3.00	09:00AM	09:55AM	M W F	29		Devereaux	1/11/2007	5/11/2007
0009499	ENG-106-104	Composition II	3.00	12:00PM	12:55PM	M W F	25		Devereaux	1/11/2007	5/11/2007
0008808	ENG-106-202	Composition II	3.00	02:00PM	02:55PM	M W	52	HYBRD ILTV	Naber	1/9/2007	5/11/2007
0008818	ENG-106-212	Composition II	3.00	07:30AM	08:55AM	T R	24	HYBRD ILTV	Naber	1/9/2007	5/11/2007
0009066	ENG-106-222	Composition II	3.00	04:30PM	05:55PM	M W	52	ILTV	Devereaux	1/9/2007	5/11/2007
0009072	ENG-106-232	Composition II	3.00	06:00PM	09:00PM	T	52	ILTV	Staff	1/9/2007	5/11/2007
0008813	ENG-106-52	Composition II	3.00	07:30AM	08:25AM	M W F	22	ICN	Naber	1/9/2007	5/11/2007
0009228	ENG-221-100	Creative Writing	3.00	12:00PM	12:55PM	M W F	100		McDonald	1/9/2007	5/11/2007
<b>ENVIRONMENTAL STUDIES</b>											
0008578	EVS-124-100	*Environmental Studies II	4.00	09:00AM	09:55AM	M W F	108		Phillips	1/9/2007	5/11/2007
0008579	EVS-124B-100	Environmental Study II Lab	0.00	08:00AM	09:50AM	T R	107		Phillips	1/9/2007	5/11/2007
0008580	EVS-124B-101	Environmental Study II Lab	0.00	10:00AM	11:50AM	T R	107		Phillips	1/9/2007	5/11/2007
0008581	EVS-204-100	Environmental Seminar II	1.00	04:00PM	04:55PM	M	108		Phillips	1/9/2007	5/11/2007
0008582	EVS-244-100	Environmental Technology Tech	4.00	11:00AM	11:55AM	M W F	107		Phillips	1/9/2007	5/11/2007
				12:00PM	01:50PM	T R	107		Phillips	1/9/2007	5/11/2007
0008583	EVS-264-100	Natural Resources Mgt Tech	4.00	01:00PM	01:55PM	M W F	107		Phillips	1/9/2007	5/11/2007
				02:00PM	03:50PM	T R	107		Phillips	1/9/2007	5/11/2007
0008584	EVS-941-100	Practicum	4.00						Phillips	1/9/2007	5/11/2007
		*Must sign up for one lab - EVS-124B-100 or EVS-124B-101									

## ESTHERVILLE CAMPUS

Please watch our WEB SITE for updates: [www.iowalakes.edu](http://www.iowalakes.edu) ◆Denoted courses appear in cumulative credit totals but do not count toward graduation requirements.

Synonym	Course/Section	Title	Credit	Start Time	End Time	Days	Room	Course types	Last Name	Start Date	End Date
<b>FILM AND THEATRE</b>											
0008780	DRA-101-100	Introduction to Theatre	3.00	11:00AM	12:25PM	T R	16		Burns	1/9/2007	5/11/2007
<b>FOREIGN LANGUAGE</b>											
0008939	FLS-141-100	Elementary Spanish I	4.00	10:00AM	10:55AM	M T W F	53		Nichols	1/9/2007	5/11/2007
0008940	FLS-142-100	Elementary Spanish II	4.00	09:00AM	09:55AM	M T W F	46		Nichols	1/9/2007	5/11/2007
0008942	FLS-142-202	Elementary Spanish II	4.00	02:00PM	02:55PM	M T W R	24	ILTV	Nichols	1/9/2007	5/11/2007
<b>GEOGRAPHY</b>											
0008741	GEO-121-12	World Regional Geography	3.00				6	S CTR	Dodge	1/9/2007	5/11/2007
0009096	GEO-121-202	World Regional Geography	3.00	11:30AM	12:25PM	T R	24	HYBRD ILTV	Hackenmiller	1/9/2007	5/11/2007
0008105	GEO-121-72	World Regional Geography	3.00					CBCIP	Hackenmiller	1/9/2007	5/11/2007
<b>GRAPHIC COMMUNICATIONS</b>											
0008907	GRA-118-100	Electronic Publishing	3.00	11:00AM	11:55AM	M W F	109		Wilson	1/9/2007	5/11/2007
0008911	GRA-121-100	Digital Drawing	3.00	08:30AM	09:55AM	T R	109		Wilson	1/9/2007	5/11/2007
0008910	GRA-140-100	Digital Imaging	3.00	10:00AM	11:25AM	T R	109		Wilson	1/9/2007	5/11/2007
0008873	GRA-162-100	Web Page Graphics	3.00	12:00PM	12:55PM	M W F	109		Witte	1/9/2007	5/11/2007
0008909	GRA-175-100	Graphic Design	3.00	01:00PM	01:55PM	M W F	109		Wilson	1/9/2007	5/11/2007
0008870	GRA-234-100	Dreamweaver Level I	3.00	04:00PM	05:50PM	T R	109		Witte	1/9/2007	5/11/2007
0008871	GRA-235-100	Dreamweaver Level II	3.00	04:00PM	05:50PM	M W	109		Witte	1/9/2007	5/11/2007
0008872	GRA-236-100	Dreamweaver Level III	3.00	02:00PM	03:50PM	T R	109		Witte	1/9/2007	5/11/2007
0008875	GRA-932-100	Web Development Internship	4.00						Witte	1/9/2007	5/11/2007
0008912	GRA-932-101	Internship	4.00						Wilson	1/9/2007	5/11/2007
<b>HUMAN SERVICES</b>											
0009966	HSV-225-100	Counseling Skills	3.00	12:00	12:55PM	MW	108	HYBRD	Ver Mulm	1/9/2007	5/11/2007
<b>HEALTH SCIENCES</b>											
0008720	HSC-114-12	Medical Terminology	3.00				6	S CTR	Dodge	1/9/2007	5/11/2007

<b>HISTORY</b>											
0008534	HIS-111-100	Western Civ: Modern to Present	3.00	11:00AM	11:55AM	M W	53	HYBRD	Hackenmiller	1/9/2007	5/11/2007
0008536	HIS-111-202	Western Civ: Modern to Present	3.00	09:00AM	09:55AM	M W F	52	ILTV	Hackenmiller	1/9/2007	5/11/2007
0008740	HIS-151-12	American History to 1877	3.00				6	S CTR	Dodge	1/9/2007	5/11/2007
0008060	HIS-151-72	American History to 1877	3.00					CBCIP	Bomgaars	1/9/2007	5/11/2007
0008540	HIS-152-100	American History Since 1877	3.00	01:00PM	01:55PM	M W	46	HYBRD	Hackenmiller	1/9/2007	5/11/2007
0009077	HIS-152-202	American History Since 1877	3.00	06:00PM	09:00PM	W	52	ILTV	McLaughlin	1/9/2007	5/11/2007
0008110	HIS-152-72	American History Since 1877	3.00					CBCIP	Bomgaars	1/9/2007	5/11/2007
0008877	HIS-201-100	*Iowa History	3.00	08:00AM	04:30PM	W R F	72		Lietz	12/27/2006	1/5/2007
		*Fast Track: 12/27, 28, 29, 1/3, 4, 5									
<b>HUMAN SERVICES</b>											
0008599	HSV-140-100	Social Work and Social Welfare	3.00	10:00AM	11:25AM	M W	108		Ver Mulm	1/9/2007	5/11/2007
0008594	HSV-162-100	Exceptional Persons	3.00	10:30AM	11:55AM	T R	108		Ver Mulm	1/9/2007	5/11/2007
<b>JOURNALISM</b>											
0008354	JOU-140-100	Newspaper Lab I	2.00	10:00AM	02:55PM	T	104		Buchholz	1/9/2007	5/11/2007
0008357	JOU-141-100	Newspaper Lab II	2.00	10:00AM	02:55PM	T	104		Buchholz	1/9/2007	5/11/2007
0008355	JOU-171-100	Introduction to Photography	3.00	12:00PM	12:55PM	M W F	105		Buchholz	1/9/2007	5/11/2007
0008356	JOU-171-101	Introduction to Photography	3.00	01:00PM	01:55PM	M W F	105		Buchholz	1/9/2007	5/11/2007
0008958	JOU-176-100	News & Forensic Photography	3.00	08:00AM	08:55AM	M W F	109		Petrick	1/9/2007	5/11/2007
0008360	JOU-210-100	Media Law and Ethics	3.00	02:00PM	02:55PM	M W F	105		Buchholz	1/9/2007	5/11/2007
0008358	JOU-220-100	Advanced Newswriting	3.00	10:00AM	10:55AM	M W F	105		Buchholz	1/9/2007	5/11/2007
0008359	JOU-240-100	Newspaper Lab III	2.00	10:00AM	02:55PM	T	104		Buchholz	1/9/2007	5/11/2007
0008361	JOU-241-100	Newspaper Lab IV	2.00	10:00AM	02:55PM	T	104		Buchholz	1/9/2007	5/11/2007
0008362	JOU-941-100	Practicum	2.00						Buchholz	1/9/2007	5/11/2007
0008363	JOU-941-101	Practicum	5.00						Buchholz	1/9/2007	5/11/2007
<b>LEGAL ASSISTANT</b>											
0008429	LGL-155-100	Legal Writing and Drafting	2.00	10:00AM	10:55AM	M W	106		Gruwell	1/9/2007	5/11/2007
0008427	LGL-200-100	American Trial Process	3.00	01:00PM	01:55PM	M W F	106		Gruwell	1/9/2007	5/11/2007
0008430	LGL-240-100	Civil Procedure and Practice	4.00	11:00AM	12:25PM	M W F	106		Gruwell	1/9/2007	5/11/2007
0008426	LGL-250-100	Family Law	3.00	12:00PM	01:25PM	T R	106		Gruwell	1/9/2007	5/11/2007
0008428	LGL-928-100	Mock Trial	3.00				106		Gruwell	1/9/2007	5/11/2007
0008431	LGL-941-100	Legal Assistant Practicum	4.00				106		Gruwell	1/9/2007	5/11/2007
0008432	LGL-941-101	Legal Asst Practicum	6.00						Gruwell	1/9/2007	5/11/2007

## ESTHERVILLE CAMPUS

Please watch our WEB SITE for updates: [www.iowalakes.edu](http://www.iowalakes.edu) ♦ Denoted courses appear in cumulative credit totals but do not count toward graduation requirements.

Synonym	Course/Section	Title	Credit	Start Time	End Time	Days	Room	Course types	Last Name	Start Date	End Date
<b>LITERATURE</b>											
0008085	LIT-101-72	Introduction to Literature	3.00					CBCIP	Devereaux	1/9/2007	5/11/2007
0008729	LIT-111-12	American Lit Since Mid-1800's	3.00				6	S CTR	Dodge	1/9/2007	5/11/2007
0008795	LIT-111-202	American Lit Since Mid-1800's	3.00	11:00AM	11:55AM	M W F	52	ILTV	Schoenewe	1/9/2007	5/11/2007
0008070	LIT-124-72	American Poetry	3.00					CBCIP	Devereaux	1/9/2007	5/11/2007
<b>MANAGEMENT</b>											
0008405	MGT-101-100	Principles of Management	3.00	10:30AM	11:55AM	M W	48		Anderson	1/9/2007	5/11/2007
0008407	MGT-101-202	Principles of Management	3.00	11:30AM	12:55PM	T R	52	ILTV	Anderson	1/9/2007	5/11/2007
<b>MARKETING</b>											
0008554	MKT-110-202	Principles of Marketing	3.00	10:00AM	10:55AM	M W F	24	ILTV	Reimer	1/9/2007	5/11/2007
0008401	MKT-140-100	Principles of Selling	3.00	09:00AM	09:55AM	M W F	48		Anderson	1/9/2007	5/11/2007
0009106	MKT-140-202	Principles of Selling	3.00	03:00PM	04:25PM	M W	52	ILTV	Reimer	1/9/2007	5/11/2007
<b>MASS MEDIA STUDIES</b>											
0008413	MMS-101-100	Mass Media	3.00	10:00AM	10:55AM	M W F	12		Pritchard	1/9/2007	5/11/2007
0008415	MMS-211-100	Advanced Video Editing	3.00	10:00AM	11:25AM	T R	12		Pritchard	1/9/2007	5/11/2007
0008419	MMS-225-100	Advanced Television Production	3.00	09:00AM	09:55AM	M W F	12		Pritchard	1/9/2007	5/11/2007
0008420	MMS-230-100	Advanced Video Production	3.00	11:00AM	11:55AM	M W F	12		Pritchard	1/9/2007	5/11/2007
0008417	MMS-234-100	Radio Workshop	4.00	02:00PM	02:55PM	M	12		Pritchard	1/9/2007	5/11/2007
0008421	MMS-241-100	Public Relations & Marketing	3.00	01:00PM	01:55PM	M W F	12		Pritchard	1/9/2007	5/11/2007
0008418	MMS-298-100	Portfolio Preparation	0.00						Pritchard	1/9/2007	5/11/2007
0008414	MMS-941-100	Practicum	2.00						Pritchard	1/9/2007	5/11/2007
0008416	MMS-941-101	Practicum	5.00						Pritchard	1/9/2007	5/11/2007
<b>MATHEMATICS</b>											

0008730	MAT-005-12	Math Refresher	1.00					6 S CTR	Dodge	1/9/2007	5/11/2007
0008733	MAT-015-12	Metric System	1.00					6 S CTR	Dodge	1/9/2007	5/11/2007
0008732	MAT-050-101	Math Improvement	1.00	01:00PM	01:55PM	T R	50		Dodge	1/9/2007	5/11/2007
0008745	MAT-050-102	Math Improvement	1.00	11:00AM	11:55AM	M W	72		Gunderson	1/9/2007	5/11/2007
0008731	MAT-050-12	Math Improvement	1.00					6 S CTR	Dodge	1/9/2007	5/11/2007
0008734	MAT-100-12	Elementary Algebra	3.00					6 S CTR	Dodge	1/9/2007	5/11/2007
0009101	MAT-101-202	Intermediate Algebra	3.00	12:30PM	01:55PM	T R	24	ILTV	Schendel	1/9/2007	5/11/2007
0008829	MAT-110-101	Math for Liberal Arts	3.00	09:00AM	09:55AM	M W	55	HYBRD	Bosch	1/9/2007	5/11/2007
0008830	MAT-110-102	Math for Liberal Arts	3.00	11:00AM	11:55AM	M W F	29		Bosch	1/9/2007	5/11/2007
0008835	MAT-110-202	Math for Liberal Arts	3.00	08:30AM	09:55AM	T R	52	ILTV	Schendel	1/9/2007	5/11/2007
0008822	MAT-127-100	College Algebra & Trigonometry	5.00	09:00AM	09:55AM	M T W R F	50		Peterson	1/9/2007	5/11/2007
0008828	MAT-127-101	College Algebra & Trigonometry	5.00	11:00AM	11:55AM	M T W R F	50		Peterson	1/9/2007	5/11/2007
0008247	MAT-127-202	College Algebra & Trigonometry	5.00	01:00PM	01:55PM	M T W R F	52	ILTV	Kadow	1/9/2007	5/11/2007
0008844	MAT-140-101	Finite Math	3.00	10:00AM	10:55AM	M W F	55		Schendel	1/9/2007	5/11/2007
0008845	MAT-140-102	Finite Math	3.00	10:00AM	11:25AM	T R	46		Schendel	1/9/2007	5/11/2007
0009294	MAT-140-104	Finite Math	3.00	12:00PM	12:55PM	M W	55	HYBRD	Schendel	1/9/2007	5/11/2007
0008847	MAT-140-202	Finite Math	3.00	04:30PM	05:55PM	M W	24	ILTV	Schendel	1/9/2007	5/11/2007
0008832	MAT-157-101	Statistics	4.00	01:00PM	01:55PM	M T W	29	HYBRD	Bosch	1/9/2007	5/11/2007
0009085	MAT-157-202	Statistics	4.00	06:00PM	10:00PM	R	52	ILTV	Burrow	1/9/2007	5/11/2007
0008831	MAT-211-201	Calculus I	5.00	10:00AM	10:55AM	M T W R F	50		Bosch	1/9/2007	5/11/2007
0008823	MAT-217-202	Calculus II	5.00	10:00AM	10:55AM	M T W R F	22	ICN	Peterson	1/9/2007	5/11/2007
0009505	MAT-225-100	Differential Equations	3.00	01:00PM	01:55PM	M W F	25		Peterson	1/9/2007	5/11/2007
<b>MUSIC - APPLIED</b>											
0008857	MUA-101-100	Applied Voice	1.00						Staff	1/9/2007	5/11/2007
0008859	MUA-119-100	Class Piano	1.00						Staff	1/9/2007	5/11/2007
0008858	MUA-120-100	Applied Piano	1.00						Staff	1/9/2007	5/11/2007
0008860	MUA-124-100	Applied Guitar	1.00						Staff	1/9/2007	5/11/2007
0008862	MUA-128-100	Appl String Bass	1.00						Staff	1/9/2007	5/11/2007
0008865	MUA-150-100	Applied Tuba	1.00						Staff	1/9/2007	5/11/2007
0008868	MUA-152-100	Applied Bassoon	1.00						Staff	1/9/2007	5/11/2007
0008773	MUA-154-100	Applied Clarinet	1.00				32		Ayres	1/9/2007	5/11/2007
0008866	MUA-156-100	Applied Flute	1.00						Staff	1/9/2007	5/11/2007
0008864	MUA-158-100	Applied French Horn	1.00						Staff	1/9/2007	5/11/2007
0008867	MUA-160-100	Applied Oboe	1.00						Staff	1/9/2007	5/11/2007
0008771	MUA-162-100	Applied Saxophone	1.00				32		Ayres	1/9/2007	5/11/2007
0008863	MUA-164-100	Applied Trombone	1.00						Staff	1/9/2007	5/11/2007
0008861	MUA-166-100	Applied Trumpet	1.00						Staff	1/9/2007	5/11/2007
0008869	MUA-180-100	Applied Percussion	1.00						Staff	1/9/2007	5/11/2007

## ESTHERVILLE CAMPUS

Please watch our WEB SITE for updates: [www.iowalakes.edu](http://www.iowalakes.edu) ♦ Denoted courses appear in cumulative credit totals but do not count toward graduation requirements.

Synonym	Course/Section	Title	Credit	Start Time	End Time	Days	Room	Course types	Last Name	Start Date	End Date
<b>MUSIC - GENERAL</b>											
0008762	MUS-100-100	Music Appreciation	3	10:00AM	11:25AM	T R	60		Ayres	1/9/2007	5/11/2007
0008763	MUS-100-101	Music Appreciation	3	09:00AM	09:55AM	M W F	60		Ayres	1/9/2007	5/11/2007
0008926	MUS-121-100	Music Theory II	3	09:00AM	09:55AM	M W F	37		Fuelberth	1/9/2007	5/11/2007
0008925	MUS-136-100	Music Theory Lab II	1	09:00AM	09:55AM	T R	37		Fuelberth	1/9/2007	5/11/2007
0008924	MUS-140-100	Concert Choir	0	02:00PM	03:25PM	M W	60		Fuelberth	1/9/2007	5/11/2007
0008923	MUS-140-101	Concert Choir	1	02:00PM	03:25PM	M W	60		Fuelberth	1/9/2007	5/11/2007
0008775	MUS-145-101	Concert Band	1	07:30PM	08:55PM	M			Ayres	1/9/2007	5/11/2007
0008929	MUS-153-100	Jazz Singers	0	11:00AM	11:55AM	M W F	60		Fuelberth	1/9/2007	5/11/2007
0008930	MUS-153-101	Jazz Singers	1	11:00AM	11:55AM	M W F	60		Fuelberth	1/9/2007	5/11/2007
0008933	MUS-155-100	Men's Chorus	0	02:00PM	03:25PM	T R	60		Fuelberth	1/9/2007	5/11/2007
0008934	MUS-155-101	Men's Chorus	1	02:00PM	03:25PM	T R	60		Fuelberth	1/9/2007	5/11/2007
0008935	MUS-156-100	Women's Chorus	0	02:00PM	03:25PM	T R	60		Fuelberth	1/9/2007	5/11/2007
0008936	MUS-156-101	Women's Chorus	1	02:00PM	03:25PM	T R	60		Fuelberth	1/9/2007	5/11/2007
0008766	MUS-170-100	Jazz Band	0	12:00PM	12:55PM	M W F	35		Ayres	1/9/2007	5/11/2007
0008767	MUS-170-101	Jazz Band	1	12:00PM	12:55PM	M W F	35		Ayres	1/9/2007	5/11/2007
0008768	MUS-175-100	Woodwind Ensemble	0	03:00PM	03:55PM		35		Ayres	1/9/2007	5/11/2007
0008769	MUS-176-100	Brass Ensemble	0	02:00PM	02:55PM		35		Ayres	1/9/2007	5/11/2007
0008770	MUS-177-100	Percussion Ensemble	0	03:00PM	03:55PM		35		Ayres	1/9/2007	5/11/2007
0008764	MUS-178-100	Handbell Ringers	0	01:00PM	01:55PM	M W F	35		Ayres	1/9/2007	5/11/2007

0008765	MUS-178-101	Handbell Ringers	1	01:00PM	01:55PM	M W F	35		Ayres	1/9/2007	5/11/2007
0008927	MUS-178-110	Handbell Ringers	0	06:00PM	06:55PM	M	35		Fuelberth	1/9/2007	5/11/2007
0008928	MUS-178-111	Handbell Ringers	1	06:00PM	06:55PM	M	35		Fuelberth	1/9/2007	5/11/2007
0008772	MUS-205-100	Jazz History & Appreciation	3	10:00AM	10:55AM	M W F	60		Ayres	1/9/2007	5/11/2007
0008932	MUS-221-100	Music Theory IV	3	10:00AM	10:55AM	M W F	37		Fuelberth	1/9/2007	5/11/2007
0008931	MUS-236-100	Music Theory Lab IV	1	10:00AM	10:55AM	T R	37		Fuelberth	1/9/2007	5/11/2007
<b>PHILOSOPHY</b>											
0008315	PHI-101-100	Introduction to Philosophy	3	10:00AM	11:25AM	T R	48		Dingel	1/9/2007	5/11/2007
0008308	PHI-101-202	Introduction to Philosophy	3	12:00PM	12:55PM	M W	52	HYBRD ILTV	Dingel	1/9/2007	5/11/2007
0008090	PHI-101-72	Introduction to Philosophy	3					CBCIP	Dingel	1/9/2007	5/11/2007
0008312	PHI-105-100	Introduction to Ethics	3	12:00PM	01:25PM	T R	53		Dingel	1/9/2007	5/11/2007
0008075	PHI-105-72	Introduction to Ethics	3					CBCIP	Dingel	1/9/2007	5/11/2007
0010339	PHI-105-202	Introduction to Ethics	3	06:00PM	09:00PM	W	24	ILTV	Staff	1/9/2007	5/11/2007
<b>PHYSICAL EDUCATION ACTIVITIES</b>											
0008604	PEA-130-100	Downhill Skiing I	1	12:00PM	01:50PM	T R	105		Tschetter	1/9/2007	5/11/2007
0008959	PEA-143-100	Physical Conditioning I	1	09:00AM	09:55AM	T R	112		Hale	1/9/2007	5/11/2007
0008960	PEA-143-101	Physical Conditioning I	1	01:00PM	01:55PM	M W	112		Hale	1/9/2007	5/11/2007
0008602	PEA-146-100	Physical Fitness I	1	11:00AM	11:55AM	M W F	114		Tschetter	1/9/2007	5/11/2007
0008851	PEA-146-101	Physical Fitness I	1						Bosch	1/9/2007	5/11/2007
0008603	PEA-176-100	Volleyball I	1	11:00AM	11:55AM	M W F	114		Tschetter	1/9/2007	5/11/2007
0008606	PEA-187-100	Weight Training I	1	03:00PM	03:55PM	M W F	202		Tschetter	1/9/2007	5/11/2007
0008854	PEA-187-101	Weight Training I	1						Bosch	1/9/2007	5/11/2007
0008605	PEA-230-100	Downhill Skiing II	1	12:00PM	01:50PM	T R	105		Tschetter	1/9/2007	5/11/2007
0008607	PEA-246-100	Physical Fitness II	1	11:00AM	11:55AM	M W F	114		Tschetter	1/9/2007	5/11/2007
0008609	PEA-287-100	Weight Training II	1	03:00PM	03:55PM	M W F			Tschetter	1/9/2007	5/11/2007
0008610	PEA-287-101	Weight Training II	1						Tschetter	1/9/2007	5/11/2007
0008855	PEA-287-102	Weight Training II	1						Bosch	1/9/2007	5/11/2007
0008953	PEA-287-103	Weight Training II	1						Vande Brake	1/9/2007	5/11/2007
0008961	PEA-292-100	Physical Conditioning III	1	09:00AM	09:55AM	M W	105		Hale	1/9/2007	5/11/2007
0008611	PEA-294-100	Weight Training III	1	03:00PM	03:55PM	M W F			Tschetter	1/9/2007	5/11/2007
0008856	PEA-294-101	Weight Training III	1						Bosch	1/9/2007	5/11/2007
0008954	PEA-294-102	Weight Training III	1						Vande Brake	1/9/2007	5/11/2007
<b>PHYSICAL EDUCATION - COACHING OFFICIATING</b>											
0008966	PEC-110-52	Coaching Ethics, Tech, & Theory	1	04:30PM	09:45PM	W	22	ICN	Hale	1/10/2007	1/24/2007
0008971	PEC-115-52	Athletic Dev & Human Growth	1	04:30PM	09:45PM	W	22	ICN	Hale	2/21/2007	3/7/2007
0008976	PEC-120-52	Body Structure & Function	1	04:30PM	09:45PM	W	22	ICN	Hale	1/31/2007	2/14/2007
0008981	PEC-126-52	Athletic Injury Prevention	2	04:30PM	09:45PM	W	22	ICN	Hale	3/21/2007	4/25/2007
0008964	PEC-128-100	Care & Prevent Athletic Injuries	3	10:00AM	10:55AM	M W F	112		Hale	1/9/2007	5/11/2007
0008608	PEC-160-100	Sports Officiating	2	01:00PM	01:55PM	T R	108		Tschetter	1/9/2007	5/11/2007

## ESTHERVILLE CAMPUS

Please watch our WEB SITE for updates: [www.iowalakes.edu](http://www.iowalakes.edu) ♦ Denoted courses appear in cumulative credit totals but do not count toward graduation requirements.

Synonym	Course/Section	Title	Credit	Start Time	End Time	Days	Room	Course types	Last Name	Start Date	End Date
<b>PHYSICAL EDUCATION AND HEALTH - GENERAL</b>											
0008962	PEH-102-100	Health	3.00	11:00AM	11:55AM	M W F	112		Hale	1/9/2007	5/11/2007
0008100	PEH-102-72	Health	3.00					CBCIP	Steele	1/9/2007	5/11/2007
0008963	PEH-161-100	Introduction Physical Education	2.00	11:00AM	11:55AM	T R	112		Hale	1/9/2007	5/11/2007
<b>PHYSICAL EDUCATION - INTERCOLLEGIATE</b>											
0008748	PEV-115-100	Varsity Baseball	1.00						Nell	1/9/2007	5/11/2007
0008951	PEV-121-100	Varsity Basketball, Men	1.00						Vande Brake	1/9/2007	5/11/2007
0008947	PEV-122-100	Varsity Basketball, Women	1.00						Radtko	1/9/2007	5/11/2007
0008955	PEV-140-100	Varsity Golf	1.00	03:30PM	05:25PM	M T W R F			Soper	1/9/2007	5/11/2007
0008852	PEV-160-100	Varsity Softball	1.00						Bosch	1/9/2007	5/11/2007
0008952	PEV-221-100	Var Basketball II, Men	1.00						Vande Brake	1/9/2007	5/11/2007
0008948	PEV-222-100	Var Bsktball, Women	1.00						Radtko	1/9/2007	5/11/2007
0008956	PEV-240-100	Varsity Golf II	1.00	03:30PM	05:25PM	M T W R F			Soper	1/9/2007	5/11/2007
0008853	PEV-260-100	Var Softball II	1.00						Bosch	1/9/2007	5/11/2007
0009292	PEV-900-100	Field Trip - Golf	0.00						Soper	1/9/2007	5/11/2007
0009293	PEV-900-101	Field Trip - Baseball	0.00						Nell	1/9/2007	5/11/2007
<b>PHYSICAL EDUCATION TRAINING</b>											

0009017	PET-120-100	Biomechanics	3.00	12:00PM	12:55PM	M W F	72		Norris	1/9/2007	5/11/2007
0009018	PET-150-100	Athletic Training Practicum II	1.00	09:00AM	09:55AM	F	124		Norris	1/9/2007	5/11/2007
<b>PHYSICAL SCIENCE</b>											
0009049	PHS-187-100	Introduction to Earth Science	4.00	10:00AM	11:50AM	R	14		Schouten	1/9/2007	5/11/2007
				11:00AM	11:55AM	M W F	14		Schouten	1/9/2007	5/11/2007
0009050	PHS-187-101	Introduction to Earth Science	4.00	08:00AM	08:55AM	M W F	14		Schouten	1/9/2007	5/11/2007
				08:00AM	09:50AM	R	14		Schouten	1/9/2007	5/11/2007
<b>PHYSICS</b>											
0009051	PHY-172-100	*College Physics II	4.00	09:00AM	09:55AM	M W F	14		Schouten	1/9/2007	5/11/2007
0009052	PHY-172B-100	College Physics II Lab	0.00	12:00PM	01:50PM	T	14		Schouten	1/9/2007	5/11/2007
0009053	PHY-172B-101	College Physics II Lab	0.00	08:00AM	09:50AM	T	14		Schouten	1/9/2007	5/11/2007
0009054	PHY-222-100	Classical Physics II	5.00	01:00PM	01:55PM	M W R F	14		Schouten	1/9/2007	5/11/2007
				12:00PM	01:50PM	T	14		Schouten	1/9/2007	5/11/2007
		*Must take one lab either PHY-172B-100 or PHY-172B-101									
<b>POLITICAL SCIENCE</b>											
0008739	POL-111-12	American National Government	3.00				6	S CTR	Dodge	1/9/2007	5/11/2007
0008044	POL-111-72	American National Government	3.00					CBCIP	Bomgaars	1/9/2007	5/11/2007
<b>PRACTICAL NURSING</b>											
0008742	PNN-101-12	Mathematics for Health Profess	1.00				6	S CTR	Dodge	1/9/2007	5/11/2007
0009480	PNN-101-202	Mathematics for Health Profess	1.00	04:30PM	05:55PM	T R	52	ILTV	Staff	1/9/2007	2/20/2007
<b>PSYCHOLOGY</b>											
0008313	PSY-111-100	Introduction to Psychology	3.00	09:00AM	09:55AM	M W	53	HYBRD	Dingel	1/9/2007	5/11/2007
0008321	PSY-111-102	Introduction to Psychology	3.00	01:00PM	01:55PM	M W F	55		Weipert	1/9/2007	5/11/2007
0008737	PSY-111-12	Introduction to Psychology	3.00				6	S CTR	Dodge	1/9/2007	5/11/2007
0008323	PSY-111-202	Introduction to Psychology	3.00	11:00AM	11:55AM	M W F	24	ILTV	Weipert	1/9/2007	5/11/2007
0009091	PSY-111-212	Introduction to Psychology	3.00	07:30AM	08:25AM	M W F	24	ILTV	Christensen	1/9/2007	5/11/2007
0009116	PSY-111-222	Introduction to Psychology	3.00	06:00PM	09:00PM	T	24	ILTV	Gilbert	1/9/2007	5/11/2007
0008080	PSY-111-72	Introduction to Psychology	3.00					CBCIP	Harmon	1/9/2007	5/11/2007
0008601	PSY-121-100	Developmental Psychology	3.00	09:00AM	10:25AM	T R	108		Ver Mulm	1/9/2007	5/11/2007
0008055	PSY-223-72	Child & Adolescent Psychology	3.00					CBCIP	Davis	1/9/2007	5/11/2007
0008327	PSY-241-100	Abnormal Psychology	3.00	12:00PM	01:25PM	T R	48		Weipert	1/9/2007	5/11/2007
0008039	PSY-241-72	Abnormal Psychology	3.00					CBCIP	Davis	1/9/2007	5/11/2007
<b>READING</b>											
0009904	RDG-031-12	◆Introduction to College Reading II	1.00				6	S CTR	Dodge	1/9/2007	5/11/2007
0008728	RDG-120-12	College Reading	1.00				6	S CTR	Dodge	1/9/2007	5/11/2007
<b>RECREATION</b>											
0008612	REC-112-100	Backpacking	2.00	02:00PM	02:55PM	T R	112		Tschetter	1/9/2007	5/11/2007
0008613	REC-113-100	Concepts of Wellness	3.00	08:00AM	08:55AM	M T W F	112		Tschetter	1/9/2007	5/11/2007
0008614	REC-118-100	Recreation Leadership	4.00	10:00AM	10:55AM	M T W F	72		Tschetter	1/9/2007	5/11/2007
0008615	REC-122-100	Recreation Fieldwork I	2.00						Tschetter	1/9/2007	5/11/2007
0008616	REC-233-100	Introduction to Outdoor Recreation	3.00	12:00PM	12:55PM	M W F	112		Tschetter	1/9/2007	5/11/2007
0008617	REC-236-100	Recreation Practicum	5.00						Tschetter	1/9/2007	5/11/2007
<b>SCIENCE</b>											
0009055	SCI-121-100	Science Interim	1.00						Klepper	1/9/2007	5/11/2007

## ESTHERVILLE CAMPUS

Please watch our WEB SITE for updates: [www.iowalakes.edu](http://www.iowalakes.edu) ◆Denoted courses appear in cumulative credit totals but do not count toward graduation requirements.

Synonym	Course/Section	Title	Credit	Start Time	End Time	Days	Room	Course types	Last Name	Start Date	End Date
<b>SIGN LANGUAGE SKILLS</b>											
0008946	SCS-101-100	Basic Sign Language	2.00	03:30PM	04:25PM	M W	25		Staff	1/9/2007	5/11/2007
<b>SOCIOLOGY</b>											
0008314	SOC-110-100	Introduction to Sociology	3.00	10:00AM	10:55AM	M W	46	HYBRD	Dingel	1/9/2007	5/11/2007
0008738	SOC-110-12	Introduction to Sociology	3.00				6	S CTR	Dodge	1/9/2007	5/11/2007
0008115	SOC-110-72	Introduction to Sociology	3.00					CBCIP	Helmers	1/9/2006	5/11/2007
0008328	SOC-115-101	Social Problems	3.00	08:30AM	09:55AM	T R	53		Weipert	1/9/2007	5/11/2007
0008329	SOC-115-102	Social Problems	3.00	08:00AM	08:55AM	M W F	55		Weipert	1/9/2007	5/11/2007
0009923	SOC-115-102	Social Problems	3.00	10:00AM	11:25AM	T R	55		Skelly	1/9/2007	5/11/2007
0008319	SOC-120-100	Marriage and Family	3.00	12:00PM	01:25PM	T R	55		Skelly	1/9/2007	5/11/2007
0008095	SOC-120-72	Marriage and Family	3.00					CBCIP	Helmers	1/9/2007	5/11/2007
0009927	SOC-126-100	Interim - CJ in the Big City	1.00						Staff	1/9/2007	5/11/2007
0009928	SOC-126-101	Interim - CJ and the Expert	1.00						Staff	1/9/2007	5/11/2007
0010101	SOC-890-101	Service Learning	1.00						Skelly	1/9/2007	5/11/2007

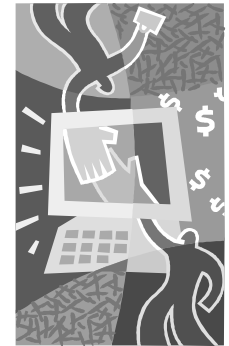
SPEECH											
0008776	SPC-101-100	Fundamentals of Oral Comm	3.00	02:00PM	03:25PM	M W	25		Burns	1/9/2007	5/11/2007
0008777	SPC-101-101	Fundamentals of Oral Comm	3.00	09:00AM	09:55AM	M W F	25		Burns	1/9/2007	5/11/2007
0008778	SPC-101-102	Fundamentals of Oral Comm	3.00	11:00AM	11:55AM	M W F	25		Burns	1/9/2007	5/11/2007
0008779	SPC-101-103	Fundamentals of Oral Comm	3.00	09:00AM	10:25AM	T R	25		Burns	1/9/2007	5/11/2007
0009231	SPC-101-110	*Fundamentals of Oral Comm	3.00	08:00AM	04:30PM	M T F S	25		Burns	3/12/2007	3/31/2007
		*Fast Track: 03/12, 13, 16, 17, 24, 31/07									
STUDENT DEVELOPMENT											
0008735	SDV-075-12	◆Strategies for Academic Success	1.00	03:00PM	03:55PM	T R	25		Dodge	1/9/2007	5/11/2007
0008736	SDV-075-16	◆Strategies for Academic Success	1.00	01:00PM	01:55PM	M W	50		Dodge	1/9/2007	5/11/2007
0008685	SDV-090-202	College 101	0.00	05:45PM	08:00PM	M	24		Mohni	1/8/2007	1/8/2007
0008744	SDV-103-101	Successful Learning	1.00	12:00PM	12:55PM	M W	53		Gunderson	1/9/2007	5/11/2007
0008725	SDV-103-12	Successful Learning	1.00					6 S CTR	Dodge	1/9/2007	5/11/2007
0008726	SDV-106-12	Library Orientation	1.00					6 S CTR	Dodge	1/9/2007	5/11/2007
0008949	SDV-195-100	Student Government I	1.00						Radtko	1/9/2007	5/11/2007
WIND ENERGY AND TURBINE TECHNOLOGY											
0009041	WTT-126-100	Basic Hydraulics	3.00	02:30PM	03:25PM	M W			Zeit	1/9/2007	5/11/2007
0009042	WTT-126B-100	Basic Hydraulics Lab	0.00	12:30PM	02:25PM	M W			Zeit	1/9/2007	5/11/2007
0009043	WTT-126B-101	Basic Hydraulics Lab	0.00	03:30PM	05:25PM	M W			Zeit	1/9/2007	5/11/2007
0009046	WTT-133-100	Wind Turbine Mechanical System	3.00	10:00AM	01:55PM	F			Zeit	1/9/2007	5/11/2007
0009047	WTT-133B-100	Wind Turbine Mech Sys Lab	0.00	08:00AM	09:55AM	F			Zeit	1/9/2007	5/11/2007
0009048	WTT-133B-101	Wind Turbine Mech Sys Lab	0.00	01:00PM	02:00PM	F			Zeit	1/9/2007	5/11/2007
0009037	WTT-134-100	Electric Motors & Fund Motor Control	4.00	10:00AM	10:55AM	T R			Schmidt	1/9/2007	5/11/2007
0009038	WTT-134B-100	Elect Motors/Fund Motor Control Lab	0.00	08:00AM	09:55AM	T R			Schmidt	1/9/2007	5/11/2007
0009039	WTT-134B-101	Elect Motors/Fund Motor Control Lab	0.00	11:00AM	01:55PM	T R			Schmidt	1/9/2007	5/11/2007
0009032	WTT-143-100	Alternating Current Elect Theory I	3.00	09:00AM	10:25AM	M W			Schmidt	1/9/2007	5/11/2007
0009034	WTT-143B-100	Alternating Current Elect. Lab	0.00	08:00AM	08:55AM	M W			Schmidt	1/9/2007	5/11/2007
0009035	WTT-143B-101	Alternating Current Elect. Lab	0.00	10:30AM	11:25AM	M W			Schmidt	1/9/2007	5/11/2007
0009044	WTT-204-100	Wind Turbine Siting	4.00	08:00AM	09:55AM	M			Zeit	1/9/2007	5/11/2007
				08:00AM	11:00AM	T			Zeit	1/9/2007	5/11/2007
0009040	WTT-216-100	Power Generation & Distribution	3.00	01:00PM	02:55PM	T R			Schmidt	1/9/2007	5/11/2007
0009045	WTT-225-100	Data Acquisition & Assessment	4.00	08:00AM	09:55AM	W			Zeit	1/9/2007	5/11/2007
				08:00AM	11:55AM	R			Zeit	1/9/2007	5/11/2007
0009036	WTT-235-100	Programmable Logic Control Systems	4.00	01:00PM	03:55PM	M W			Schmidt	1/9/2007	5/11/2007

*Check out Iowa Lakes' new Web Development and Design Program.  
It may be just what you're looking for!*

Web Development and Design trains students in both the creative and technical aspects of the environment. Creative skills are used in developing informative, easy-to-navigate web site designs using Macromedia Dreamweaver, Flash and Adobe Photoshop software. Technical training is provided in basic code writing using HTML and JavaScript.

For further information contact:

Jeremy Witte  
712/362-7767  
jwitte@iowalakes.edu



## SPENCER CAMPUS

Please watch our WEB SITE for updates: [www.iowalakes.edu](http://www.iowalakes.edu) ◆Denoted courses appear in cumulative credit totals but do not count toward graduation requirements.

Synonym	Course/Section	Title	Credit	Start Time	End Time	Days	Room	Course types	Last Name	Start Date	End Date
ACCOUNTING											
0008663	ACC-131-15	Principles of Accounting I	4.00				101	S CTR	Kamies	1/9/2007	5/11/2007
0008499	ACC-132-205	Principles of Accounting II	4.00	08:30AM	09:55AM	M W	110	ILTV	Berven	1/9/2007	5/11/2007
				09:00AM	09:55AM	F	110	ILTV	Berven	1/9/2007	5/11/2007
0009006	ACC-161-100	Payroll Accounting	3.00	11:00AM	11:55AM	M W F	108A		Simons	1/9/2007	5/11/2007
0008504	ACC-232-205	Intermediate Accounting II	4.00	12:00PM	12:55PM	F	109	HYBRD ILTV	Berven	1/9/2007	5/11/2007
				09:00AM	09:55AM	T R	110	HYBRD ILTV	Berven	1/9/2007	5/11/2007
0009064	ACC-261-205	Income Tax Accounting	3.00	02:00PM	03:25PM	T R	109	ILTV	Grimm	1/9/2007	5/11/2007
0009007	ACC-311-100	Computer Accounting	3.00	01:00PM	02:25PM	M W	122		Simons	1/9/2007	5/11/2007
ADMINISTRATIVE ASSISTANT											
0008664	ADM-106-15	Introduction to Keyboarding	2.00				101	S CTR	Kamies	1/9/2007	5/11/2007

0009471	ADM-132-100	Business Math & Calculators	2.00	01:00PM	02:55PM	F			Taber	1/11/2007	5/11/2007
0009472	ADM-162-30	Office Procedures	3.00	02:30PM	03:55PM	M W			Taber	1/11/2007	5/11/2007
0009222	ADM-220-100	Career Development Skills	1.00	02:30PM	03:25PM	M	204		Taber	1/9/2007	5/11/2007
0009255	ADM-255-102	Business Professionalism II	1.00	12:00PM	12:55PM	F			Simons	1/9/2007	5/11/2007
0009256	ADM-255-103	Business Professionalism II	0.00	12:00PM	12:55PM	F			Simons	1/9/2007	5/11/2007
0009257	ADM-355-102	Business Professionalism IV	1.00	12:00PM	12:55PM	F			Simons	1/9/2007	5/11/2007
0009258	ADM-355-103	Business Professionalism IV	0.00	12:00PM	12:55PM	F			Simons	1/9/2007	5/11/2007
<b>ANTHROPOLOGY</b>											
0008053	ANT-105-75	Cultural AnthropoloGy	3.00					CBCIP	Tigges	1/9/2007	5/11/2007
<b>ART</b>											
0008754	ART-101-205	Art Appreciation	3.00	10:00AM	11:25AM	T R	110	ILTV	Lindell	1/9/2007	5/11/2007
0008068	ART-206-75	Art History	3.00					CBCIP	Kattner	1/9/2007	5/11/2007
<b>ASSOCIATE DEGREE NURSING</b>											
0009178	ADN-501-205	Nursing Intervention/Adult Health I	7.00	06:00PM	10:00PM	M W	109	ILTV	Oppenheimer	1/8/2007	5/9/2007
0009192	ADN-502-101	Nursing Interv/Adult Health I Clinical	2.00	06:30AM	02:30PM	S SU			Staff	1/24/2007	5/6/2007
<b>BIOLOGY</b>											
0009300	BIO-174-205	**Human Anatomy & Physiology II	4.00	06:00PM	09:00PM	M	110	ILTV	Abbott	1/9/2007	5/11/2007
0009301	BIO-174B-101	***Human Anatomy/Physiology II lab	0.00	06:00PM	08:00PM	W	117		Abbott	1/9/2007	5/11/2007
		**Must register for one lab - BIO-174B-100 or BIO-174B-101									
		***Must register for BIO-174-201, 202, 204, 205									
<b>BUSINESS</b>											
0008512	BUS-115-205	Business Correspondence	2.00	01:00PM	01:55PM	F	109	HYBRD ILTV	Berven	1/9/2007	5/11/2007
0009084	BUS-211-205	Business Statistics	4.00	06:00PM	10:00PM	R	109	ILTV	Staff	1/9/2007	5/11/2007
<b>BUSINESS COMPUTER APPLICATIONS</b>											
0009008	BCA-134-100	Word Processing	3.00	01:00PM	02:55PM	T R	122		Krei	1/9/2007	5/11/2007
<b>COMPUTER SCIENCE</b>											
0008885	CSC-101-101	Computer Familiarization	1.00	10:00AM	03:00PM	T W R F	122		Krei	1/2/2007	1/5/2007
0009223	CSC-110-109	*Introduction to Computers	3.00	11:00AM	12:25PM	M W	122		Krei	1/9/2007	5/11/2007
		*Fast Track: 1/2, 3, 4, 5 (Snow day 1/6)									
<b>CHEMISTRY</b>											
0009135	CHM-151-205	College Chemistry I	4.00	4:30PM	06:00PM	TR		ILTV	Torney	1/9/2007	5/11/2007
0010192	CHM-151B-101	*Lab		06:00PM	08:00PM	W			Munson		
		*Lab held at Spencer High School									
<b>ECONOMICS</b>											
0008465	ECN-120-205	Principles of Macroeconomics	3.00	10:00AM	10:55AM	M W F	109	ILTV	Wimmer	1/9/2007	5/11/2007
0009131	ECN-120-215	Principles of Macroeconomics	3.00	06:00PM	09:00PM	R	110	ILTV	Wimmer	1/9/2007	5/11/2007
0008471	ECN-130-205	Principles of Microeconomics	3.00	10:00AM	11:25AM	T R	109	ILTV	Wimmer	1/9/2007	5/11/2007
<b>EDUCATION</b>											
0008593	EDU-215-205	*Introduction to Education	3.00	03:00PM	04:25PM	T R	110	ILTV	Ver Mulm	1/9/2007	5/11/2007
0008600	EDU-217-100	**Introduction to Education	1.00						Ver Mulm	1/9/2007	5/11/2007
0008785	EDU-235-205	Children's Literature	3.00	12:00PM	12:55PM	M W F	110	ILTV	Barr/Bunt	1/9/2007	5/11/2007
		*Must take EDU-217 Introduction to Education Lab									
		**Students must register for EDU-215 Introduction to Education									

Need a class to improve home, work or change professions?  
TRY OUR CONTINUING EDUCATION CLASSES....

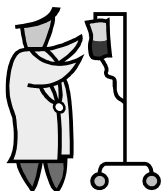
Call 712-362-7831 or go to:  
[www.iowalakes.edu](http://www.iowalakes.edu) and click on  
Continuing Education

## SPENCER CAMPUS

Please watch our WEB SITE for updates: [www.iowalakes.edu](http://www.iowalakes.edu) ♦Denoted courses appear in cumulative credit totals but do not count toward graduation requirements.

Synonym	Course/Section	Title	Credit	Start Time	End Time	Days	Room	Course types	Last Name	Start Date	End Date
<b>ENGLISH COMPOSITION</b>											
0008669	ENG-012-15	♦Basic Writing	2.00				101	S CTR	Kamies	1/9/2007	5/11/2007
0008668	ENG-028-15	♦Writing Strategies	2.00				101	S CTR	Kamies	1/9/2007	5/11/2007
0008670	ENG-062-15	♦Introduction to College Writing	2.00				101	S CTR	Kamies	1/9/2007	5/11/2007
0009226	ENG-105-104	Composition I	3.00	10:00AM	11:25AM	T R	108A		Schoenewe	1/9/2007	5/11/2007
0008806	ENG-105-205	Composition I	3.00	01:00PM	01:55PM	M W	109	HYBRD ILTV	Naber	1/9/2007	5/11/2007
0008811	ENG-106-205	Composition II	3.00	02:00PM	02:55PM	M W	109	HYBRD ILTV	Naber	1/9/2007	5/11/2007
0008821	ENG-106-215	Composition II	3.00	07:30AM	08:55AM	T R	110	HYBRD ILTV	Naber	1/9/2007	5/11/2007
0009069	ENG-106-225	Composition II	3.00	04:30PM	05:55PM	M W	109	ILTV	Staff	1/9/2007	5/11/2007
0009075	ENG-106-235	Composition II	3.00	06:00PM	09:00PM	T	109	ILTV	Staff	1/9/2007	5/11/2007

0008816	ENG-106-55	Composition II	3.00	07:30AM	08:25AM	M W F	118	ICN	Naber	1/9/2007	5/11/2007
<b>FOREIGN LANGUAGE-SPANISH</b>											
0008945	FLS-142-205	Elementary Spanish II	4.00	02:00PM	02:55PM	M T W R	110	ILTV	Nichols	1/9/2007	5/11/2007
0010039	FLS-142-55	Elementary Spanish II	4.00	06:00PM	07:55PM	T R	ICN	Spencer Library	Nichols	1/9/2007	5/11/2007
<b>GEOGRAPHY</b>											
0008681	GEO-121-15	World Regional Geography	3.00				101	S CTR	Kamies	1/9/2007	5/11/2007
0009099	GEO-121-205	World Regional Geography	3.00	11:30AM	12:25PM	T R	110	HYBRD ILTV	Hackenmiller	1/9/2007	5/11/2007
0008108	GEO-121-75	World Regional Geography	3.00					CBCIP	Hackenmiller	1/9/2007	5/11/2007
<b>HEALTH CARE ADMINISTRATION</b>											
0009221	HCA-111-40	Health Care Administration II	3.00	08:00AM	12:00PM	S	108A		Ruyter	1/9/2007	5/11/2007
0008990	HCA-163-100	Introduction to Senior Living Comm	3.00						Donovan	1/9/2007	5/11/2007
0008991	HCA-280-100	Health Care Practicum I	2.00						Donovan	1/9/2007	5/11/2007
0008992	HCA-281-100	Health Care Practicum II	3.00						Donovan	1/9/2007	5/11/2007
0008993	HCA-282-100	Health Care Practicum III	2.00						Donovan	1/9/2007	5/11/2007
0008994	HCA-283-100	Health Care Admin Practicum IV	2.00						Donovan	1/9/2007	5/11/2007
0008995	HCA-284-100	Health Care Admin Practicum V	2.00						Donovan	1/9/2007	5/11/2007
0008997	HCA-285-100	Health Care Admin Practicum VI	1.00						Donovan	1/9/2007	5/11/2007
0008996	HCA-946-100	Seminar	1.00						Donovan	1/9/2007	5/11/2007
<b>HEALTH INFORMATION TECHNOLOGY</b>											
0009202	HIT-245-100	Basic ICD-9-CM Coding	3.00	03:00PM	04:55PM	T R	122		Steuben	1/9/2007	5/11/2007
<b>HEALTH SCIENCES</b>											
0008665	HSC-114-15	Medical Terminology	3.00				101	S CTR	Kamies	1/9/2007	5/11/2007
<b>HISTORY</b>											
0008539	HIS-111-205	Western Civ: Modern to Present	3.00	09:00AM	09:55AM	M W F	109	ILTV	Hackenmiller	1/9/2007	5/11/2007
0008680	HIS-151-15	American History to 1877	3.00				101		Kamies	1/9/2007	5/11/2007
0008063	HIS-151-75	American History to 1877	3.00					CBCIP	Bomgaars	1/9/2007	5/11/2007
0008113	HIS-152-75	American History Since 1877	3.00					CBCIP	Bomgaars	1/9/2007	5/11/2007
<b>LITERATURE</b>											
0008088	LIT-101-75	Introduction to Literature	3.00					CBCIP	Devereaux	1/9/2007	5/11/2007
0008672	LIT-111-15	American Literature Since Mid-1800's	3.00				101	S CTR	Kamies	1/9/2007	5/11/2007
0008798	LIT-111-205	American Literature Since Mid-1800's	3.00	11:00AM	11:55AM	M W F	109	ILTV	Schoenewe	1/9/2007	5/11/2007
0008073	LIT-124-75	American Poetry	3.00					CBCIP	Devereaux	1/9/2007	5/11/2007
<b>MANAGEMENT</b>											
0008410	MGT-101-205	Principles of Management	3.00	11:30AM	12:55PM	T R	109	ILTV	Anderson	1/9/2007	5/11/2007
0009195	MGT-170-40	Human Resource Management	3.00	08:00AM	12:00PM	S	108B		Anderson	1/9/2007	5/11/2007
<b>MARKETING</b>											
0008557	MKT-110-205	Principles of Marketing	3.00	10:00AM	10:55AM	M W F	110	ILTV	Reimer	1/9/2007	5/11/2007
0009109	MKT-140-205	Principles of Selling	3.00	03:00PM	04:25PM	M W	109	ILTV	Reimer	1/9/2007	5/11/2007



**Evening/Weekend Nursing**  
**Call Bernie Wise -**  
**712-352-5293**

**Health Care Administration**  
**Medical Office Technology**

**Massage Therapy**  
**Pharmacy Technician**  
**Surgical Technology**  
**Medical Assistant**  
**Limited Radiology**

Check out our HEALTH CAREERS

[www.iowalakes.edu](http://www.iowalakes.edu)

For additional information call 712/362-7141



## SPENCER CAMPUS

Please watch our WEB SITE for updates: [www.iowalakes.edu](http://www.iowalakes.edu) ♦ Denoted courses appear in cumulative credit totals but do not count toward graduation requirements.

Synonym	Course/Section	Title	Credit	Start Time	End Time	Days	Room	Course types	Last Name	Start Date	End Date
<b>MASSAGE THERAPY</b>											
0009208	MST-110-100	Pathology for Massage Therapy	2.00	03:00PM	04:55PM	R	300		Thompson	1/9/2007	5/11/2007
0009216	MST-110-30	Pathology for Massage Therapy	2.00	05:30PM	07:25PM	R	300		Thompson	1/9/2007	5/11/2007
0009005	MST-113-100	Kinesiology/Anatomy in Clay	3.00	10:00AM	12:00PM	T R	300		Blackburn	1/9/2007	5/11/2007
0009210	MST-113-30	Kinesiology/Anatomy in Clay	3.00	08:30PM	10:00PM	W	300		Blackburn	1/9/2007	5/11/2007
				07:30PM	10:00PM	R					
0009204	MST-121-100	Reflexology	1.00	01:00PM	02:55PM	R	300		Gentle	3/20/2007	5/11/2007

0009212	MST-121-30	Reflexology	1.00	05:00PM	07:40PM	T	300		Gentle	3/20/2007	5/11/2007
0009203	MST-123-100	Sport Massage	3.00	01:00PM	02:55PM	W	300		Blackburn	1/9/2007	5/11/2007
				10:30AM	12:00PM	W	300		Blackburn	1/9/2007	5/11/2007
0009211	MST-123-30	Sport Massage	3.00	05:30PM	08:25PM	W	300		Blackburn	1/9/2007	5/11/2007
0009205	MST-140-100	Spa Services	1.00	01:00PM	02:55PM	R	300		Gentle	1/9/2007	3/6/2007
0009213	MST-140-30	Spa Services	1.00	07:45PM	10:00PM	T	300		Gentle	1/9/2007	3/6/2007
0009206	MST-141-100	Geriatric Massage	1.00	08:30AM	10:25AM	T	300		McCarty	1/9/2007	3/6/2007
0009214	MST-141-30	Geriatric Massage	1.00	05:30PM	07:45PM	T	300		McCarty	1/9/2007	3/6/2007
0009207	MST-143-100	Intermediate Massage	3.00	01:00PM	02:55PM	M	300		Gentle	1/9/2007	5/11/2007
				10:00AM	12:00PM	M	300		Gentle	1/9/2007	5/11/2007
0009215	MST-143-30	Intermediate Massage	3.00	05:30PM	10:00PM	M	300		Gentle	1/9/2007	5/11/2007
0009209	MST-149-100	Pregnancy/Infant Massage	1.00	01:00PM	02:55PM	T	300		Gentle	3/20/2007	5/11/2007
0009217	MST-149-30	Pregnancy/Infant Massage	1.00	07:45PM	10:00PM	T	300		Veldboom	3/20/2007	5/11/2007
<b>MATHEMATICS</b>											
0008673	MAT-005-15	◆Math Refresher	1.00				101	S CTR	Kamies	1/9/2007	5/11/2007
0008675	MAT-015-15	◆Metric System	1.00				101	S CTR	Kamies	1/9/2007	5/11/2007
0008674	MAT-050-15	◆Math Improvement	1.00				101	S CTR	Kamies	1/9/2007	5/11/2007
0008989	MAT-050-30	◆Math Improvement	1.00	05:00PM	05:55PM	T R	111		Jackson	1/9/2007	5/11/2007
0008676	MAT-100-15	Elementary Algebra	3.00				101	S CTR	Kamies	1/9/2007	5/11/2007
0009104	MAT-101-205	Intermediate Algebra	3.00	12:30PM	01:55PM	T R	110	ILTV	Schendel	1/9/2007	5/11/2007
0008838	MAT-110-205	Math for Liberal Arts	3.00	08:30AM	09:55AM	T R	109	ILTV	Schendel	1/9/2007	5/11/2007
0008250	MAT-127-205	College Algebra & Trigonometry	5.00	01:00PM	01:55PM	M T W R F	109	ILTV	Kadow	1/9/2007	5/11/2007
0008850	MAT-140-205	Finite Math	3.00	04:30PM	05:55PM	M W	110	ILTV	Cuttel	1/9/2007	5/11/2007
0009088	MAT-157-205	Statistics	4.00	06:00PM	10:00PM	R	109	ILTV	Burrow	1/9/2007	5/11/2007
0008827	MAT-217-205	Calculus II	5.00	10:00AM	10:55AM	M T W R F	118	ICN	Peterson	1/9/2007	5/11/2007
<b>MEDICAL ASSISTANT</b>											
0009010	MAP-117-100	Medical Office Management II	3.00	04:00PM	05:55PM	M W	122		Simons	1/9/2007	5/11/2007
0009009	MAP-128-100	Automated Medical Office	2.00	10:00AM	10:55AM	M W	122		Simons	1/9/2007	5/11/2007
0009011	MAP-135-100	Medical Transcription II	3.00	10:00AM	11:55AM	T R	122		Simons	1/9/2007	5/11/2007
0009000	MAP-254-100	Limited Radiology II	4.00	05:00PM	06:55PM	T R	117		Dau	1/9/2007	5/11/2007
0009001	MAP-330-100	Career Prep Medical Assistant	1.00	09:00AM	09:55AM	R	108B		Hartig	1/9/2007	5/11/2007
0009004	MAP-343-100	Clinical Assisting II	3.00	01:00PM	02:55PM	T R	204		Hartig	1/9/2007	5/11/2007
0009201	MAP-402-100	Medical Law and Ethics	2.00	09:00AM	10:55AM	F	204		Dingel	1/9/2007	5/11/2007
0009200	MAP-453-100	Medical Assisting Mental Health	2.00	09:00AM	09:55AM	T	108B		Rohret	1/9/2007	5/11/2007
				08:00AM	08:55AM	F	108B				
0009003	MAP-515-100	Pharmacology	3.00	10:00AM	11:55AM	T R	117		Hartig	1/9/2007	5/11/2007
0009002	MAP-553-100	Hum Body in Health & Disease II	4.00	01:00PM	03:55PM	M W	108A		Hartig	1/9/2007	5/11/2007
0009739	MAP-940-100	Medical Secretary Practicum	3.00						Simons	1/9/2007	5/11/2007
<b>MUSIC (GENERAL)</b>											
0008879	MUS-100-102	*Music Appreciation	3.00	08:00AM	04:30PM	T W R F	206		Ayres	12/21/2006	1/5/2007
		*Fast Track: 12/21, 22, 1/2, 3, 4, 5 (Snow days on Saturdays)									
<b>PHARMACY TECHNOLOGY</b>											
0009196	PHR-107-100	Pharmacy Technology I	7.00						Staff	1/9/2007	5/11/2007
0009197	PHR-117-100	Pharmacy Technician II	7.00						Staff	1/9/2007	5/11/2007
0009198	PHR-121-30	Pharmacy Technician Seminar	1.00	06:30PM	08:30PM	W			Mayer	1/9/2007	3/7/2007
<b>PHILOSOPHY</b>											
0008311	PHI-101-205	Introduction to Philosophy	3.00	12:00PM	12:55PM	M W	109	HYBRD ILTV	Dingel	1/9/2007	5/11/2007
0008093	PHI-101-75	Introduction to Philosophy	3.00					CBCIP	Dingel	1/9/2007	5/11/2007
0008078	PHI-105-75	Introduction to Ethics	3.00					CBCIP	Dingel	1/9/2007	5/11/2007
0010342	PHI-105-205	Introduction to Ethics	3.00	06:00PM	09:00PM	W	110	ILTV	Staff	1/9/2007	5/11/2007
<b>PHYSICAL EDUCATION - COACHING OFFICIATING</b>											
0008969	PEC-110-55	Coaching Ethics, Tech, & Theory	1.00	04:30PM	09:45PM	W	118	ICN	Hale	1/10/2007	1/24/2007
0008974	PEC-115-55	Athletic Development & Human Growth	1.00	04:30PM	09:45PM	W	118	ICN	Hale	2/21/2007	3/7/2007
0008979	PEC-120-55	Body Structure & Function	1.00	04:30PM	09:45PM	W	118	ICN	Hale	1/31/2007	2/14/2007
0008984	PEC-126-55	Athletic Injury Prevention	2.00	04:30PM	09:45PM	W	118	ICN	Hale	3/21/2007	4/25/2007

## SPENCER CAMPUS

Please watch our WEB SITE for updates: [www.iowalakes.edu](http://www.iowalakes.edu) ◆Denoted courses appear in cumulative credit totals but do not count toward graduation requirements.

Synonym	Course/Section	Title	Credit	Start Time	End Time	Days	Room	Course types	Last Name	Start Date	End Date
<b>PHYSICAL EDUCATION AND HEALTH - GENERAL</b>											
0008103	PEH-102-75	Health	3.00					CBCIP	Steele	1/9/2007	5/11/2007
<b>POLITICAL SCIENCE</b>											
0008679	POL-111-15	American National Government	3.00				101	S CTR	Kamies	1/9/2007	5/11/2007
0008047	POL-111-75	American National Government	3.00					CBCIP	Bomgaars	1/9/2007	5/11/2007

<b>PRACTICAL NURSING</b>											
0008683	PNN-101-15	Mathematics for Health Professionals	1.00				101	S CTR	Kamies	1/9/2007	5/11/2007
0009483	PNN-101-205	Mathematics for Health Professionals	1.00	04:30PM	05:55PM	T R	109	ILTV	Staff	1/9/2007	2/20/2007
0009315	PNN-108-30	Survival Spanish for Nursing	2.00	06:00PM	08:00PM	T			Nichols	1/9/2007	5/11/2007
<b>PSYCHOLOGY</b>											
0008677	PSY-111-15	Introduction to Psychology	3.00				101	S CTR	Kamies	1/9/2007	5/11/2007
0008326	PSY-111-205	Introduction to Psychology	3.00	11:00AM	11:55AM	M W F	110	ILTV	Weipert	1/9/2007	5/11/2007
0009094	PSY-111-215	Introduction to Psychology	3.00	07:30AM	08:25AM	M W F	110	ILTV	Staff	1/9/2007	5/11/2007
0009119	PSY-111-225	Introduction to Psychology	3.00	06:00PM	09:00PM	T	110	ILTV	Gilbert	1/9/2007	5/11/2007
0008083	PSY-111-75	Introduction to Psychology	3.00					CBCIP	Harmon	1/9/2007	5/11/2007
0008058	PSY-223-75	Child & Adolescent Psychology	3.00					CBCIP	Davis	1/9/2007	5/11/2007
0008042	PSY-241-75	Abnormal Psychology	3.00					CBCIP	Davis	1/9/2007	5/11/2007
<b>READING</b>											
0008666	RDG-030-15	◆Introduction to College Reading I	1.00				101	S CTR	Kamies	1/9/2007	5/11/2007
0008667	RDG-031-15	◆Introduction to College Reading II	1.00				101	S CTR	Kamies	1/9/2007	5/11/2007
0008682	RDG-120-15	College Reading	1.00				101	S CTR	Kamies	1/9/2007	5/11/2007
<b>SOCIOLOGY</b>											
0008678	SOC-110-15	Introduction to Sociology	3.00				101	S CTR	Kamies	1/9/2007	5/11/2007
0008118	SOC-110-75	Introduction to Sociology	3.00					CBCIP	Helmers	1/9/2006	5/11/2007
0008098	SOC-120-75	Marriage and Family	3.00					CBCIP	Helmers	1/9/2007	5/11/2007
<b>SPEECH</b>											
0008882	SPC-101-108	*Fundamentals of Oral Communications	3.00	10:00AM	06:30PM	T W R F	108A		Higgins	12/21/2006	1/5/2007
0009225	SPC-101-109	Fundamentals of Oral Communications	3.00	03:00PM	04:25PM	T R	108A		Schoenewe	1/9/2007	5/11/2007
		*Fast Track: 12/21, 22, 1/2, 3, 4, 5 (Snow days on Saturdays)									
<b>STUDENT DEVELOPMENT</b>											
0009931	SDV-075-15	◆Strategies for Academic Success	1.00				101	S CTR	Kamies	1/9/2007	5/11/2007
0008688	SDV-090-205	College 101	0.00	05:45PM	08:00PM	M	110		Mohni	1/8/2007	1/8/2007
0008671	SDV-103-15	Successful Learning	1.00				101	S CTR	Kamies	1/9/2007	5/11/2007
<b>SURGICAL TECHNOLOGY</b>											
0009254	SUR-222-100	Surgical Techniques II	2.00	12:30PM	03:25PM	W	204		Grafft	1/9/2007	5/11/2007
0008987	SUR-223-100	Surgical Procedures	6.00	10:00AM	11:55AM	M T W	204		Grafft	1/9/2007	5/11/2007
0009290	SUR-227-100	Surgical Procedures Lab	2.00	12:30PM	04:30PM	T	205		Grafft	1/9/2007	5/11/2007
0008988	SUR-420-100	Pharmacology for Surg Tech	2.00	09:00AM	09:55AM	M T W			Sover	1/9/2007	5/11/2007
0009252	SUR-440-100	Biomedical Sci for Surg Tech	2.00	12:30PM	02:25PM	M	204		Grafft	1/9/2007	5/11/2007
0008986	SUR-520-100	Surgical Technology Practicum I	2.00						Grafft	1/9/2007	5/11/2007

## Welcome to Iowa Lakes Community College



Open door admission...

- ◆Continuous first-come admission
- ◆No application fee
- ◆Enrollment in many programs limited - apply as soon as possible

It's simple to apply! It's FREE!

- ◆Complete an application for admission
- ◆Make an appointment for an interview with your advisor
- ◆Send final and all college transcripts to Iowa Lakes (they won't affect acceptance)
- ◆Home schooled students provide final high school diploma, transcripts, or GED as well as ACT scores and transcripts from all colleges attended.

Career Resource Center

◆Undecided about your career direction?

- ◆Exploration activities to assess your interests
- ◆Look at career options available
- ◆Prepare for job interviews
- ◆Develop resumes, cover letters, portfolios

Looking for a job?

- ◆Find out about local employment opportunities with area business and industry
- ◆Career fairs for college, summer and permanent employment

## SPIRIT LAKE CAMPUS

Please watch our WEB SITE for updates: [www.iowalakes.edu](http://www.iowalakes.edu) ◆Denoted courses appear in cumulative credit totals but do not count toward graduation requirements.

Synonym	Course/Section	Title	Credit	Start Time	End Time	Days	Room	Course types	Last Name	Start Date	End Date
<b>ACCOUNTING</b>											
0008642	ACC-131-14	Principles of Accounting I	4.00				131	S CTR	Higgins	1/9/2007	5/11/2007
0008498	ACC-132-204	Principles of Accounting II	4.00	08:30AM	09:55AM	M W	124	ILTV	Berven	1/9/2007	5/11/2007

				09:00AM	09:55AM	F	124	ILTV	Berven	1/9/2007	5/11/2007
0008503	ACC-232-204	Intermediate Accounting II	4.00	12:00PM	12:55PM	F	123	HYBRD ILTV	Berven	1/9/2007	5/11/2007
				09:00AM	09:55AM	T R	124	HYBRD ILTV	Berven	1/9/2007	5/11/2007
0009063	ACC-261-204	Income Tax Accounting	3.00	02:00PM	03:25PM	T R	123	ILTV	Grimm	1/9/2007	5/11/2007
<b>ADMINISTRATIVE ASSISTANT</b>											
0008643	ADM-106-14	Introduction to Keyboarding	2.00				131	S CTR	Higgins	1/9/2007	5/11/2007
<b>ANTHROPOLOGY</b>											
0008052	ANT-105-74	Cultural Anthropology	3.00					CBCIP	Tigges	1/9/2007	5/11/2007
<b>ART</b>											
0008753	ART-101-204	Art Appreciation	3.00	10:00AM	11:25AM	T R	124	ILTV	Lindell	1/9/2007	5/11/2007
0008067	ART-206-74	Art History	3.00					CBCIP	Kattner	1/9/2007	5/11/2007
<b>BIOLOGY</b>											
0009730	BIO-105-102	Introductory Biology	4.00	06:00PM	08:30PM	T R	120		Jones	1/9/2007	5/11/2007
0009299	BIO-174-204	*Human Anatomy & Physiology II	4.00	06:00PM	09:00PM	M	124	ILTV	Abbott	1/9/2007	5/11/2007
0009296	BIO-174B-100	**Human Anatomy/Physiology II lab	0.00	06:00PM	08:00PM	W	120		Cornwall	1/9/2007	5/11/2007
		*Must register for one lab - BIO-174B-100 or BIO-174B-101									
		**Lab for sections BIO-174-201, 202, 204, 205									
<b>BUSINESS</b>											
0008511	BUS-115-204	Business Correspondence	2.00	01:00PM	01:55PM	F	123	HYBRD ILTV	Berven	1/9/2007	5/11/2007
0009083	BUS-211-204	Business Statistics	4.00	06:00PM	10:00PM	R	123	ILTV	Staff	1/9/2007	5/11/2007
<b>CHEMISTRY</b>											
0009134	CHM-151-204	*College Chemistry I	4.00	04:30PM	05:55PM	T R	124	ILTV	Torney	1/9/2007	5/11/2007
		*Must attend lab either in Algona or Spencer									
<b>COMPUTER SCIENCE</b>											
0009143	CSC-110-108	Introduction to Computers	3.00	06:00PM	09:00PM	W	129		Taber	1/9/2007	5/11/2007
<b>ECONOMICS</b>											
0008464	ECN-120-204	Principles of Macroeconomics	3.00	10:00AM	10:55AM	M W F	123	ILTV	Wimmer	1/9/2007	5/11/2007
0009130	ECN-120-214	Principles of Macroeconomics	3.00	06:00PM	09:00PM	R	124	ILTV	Wimmer	1/9/2007	5/11/2007
0008470	ECN-130-204	Principles of Microeconomics	3.00	10:00AM	11:25AM	T R	123	ILTV	Wimmer	1/9/2007	5/11/2007
<b>EDUCATION</b>											
0008592	EDU-215-204	*Introduction to Education	3.00	03:00PM	04:25PM	T R	124	ILTV	Ver Mulm	1/9/2007	5/11/2007
0008600	EDU-217-100	**Introduction to Education	1.00						Ver Mulm	1/9/2007	5/11/2007
0008784	EDU-235-204	Children's Literature	3.00	12:00PM	12:55PM	M W F	124	ILTV	Barr/Bunt	1/9/2007	5/11/2007
		*Must take EDU-217 Introduction to Education Lab									
		**Students must register for EDU-215 Introduction to Education									
<b>EMERGENCY MEDICAL SERVICES</b>											
0009235	EMS-215-30	*Emergency Med Tech - Intern	3.00	07:00PM	10:00PM	T R			Dobbins	1/9/2007	5/11/2007
		*Class held at the DCEMS Bldg									
<b>ENGLISH COMPOSITION</b>											
0008648	ENG-012-14	◆Basic Writing	2.00				131	S CTR	Higgins	1/9/2007	5/11/2007
0008647	ENG-028-14	◆Writing Strategies	2.00				131	S CTR	Higgins	1/9/2007	5/11/2007
0008649	ENG-062-14	◆Introduction to College Writing	2.00				131	S CTR	Higgins	1/9/2007	5/11/2007
0008805	ENG-105-204	Composition I	3.00	01:00PM	01:55PM	M W	123	HYBRD ILTV	Naber	1/9/2007	5/11/2007
0008810	ENG-106-204	Composition II	3.00	02:00PM	02:55PM	M W	123	HYBRD ILTV	Naber	1/9/2007	5/11/2007
0008820	ENG-106-214	Composition II	3.00	07:30AM	08:55AM	T R	124	HYBRD ILTV	Naber	1/9/2007	5/11/2007
0009068	ENG-106-224	Composition II	3.00	04:30PM	05:55PM	M W	123	ILTV	Staff	1/9/2007	5/11/2007
0009074	ENG-106-234	Composition II	3.00	06:00PM	09:00PM	T	123	ILTV	Staff	1/9/2007	5/11/2007
0008815	ENG-106-54	Composition II	3.00	07:30AM	08:25AM	M W F	122	ICN	Naber	1/9/2007	5/11/2007
<b>FOREIGN LANGUAGE-SPANISH</b>											
0008944	FLS-142-204	Elementary Spanish II	4.00	02:00PM	02:55PM	M T W R	124	ILTV	Nichols	1/9/2007	5/11/2007
0010038	FLS-142-54	Elementary Spanish II	4.00	06:00PM	07:55PM	T R	ICN	High School	Nichols	1/9/2007	5/11/2007
<b>GEOGRAPHY</b>											
0008661	GEO-121-14	World Regional Geography	3.00				131	S CTR	Higgins	1/9/2007	5/11/2007
0009098	GEO-121-204	World Regional Geography	3.00	11:30AM	12:25PM	T R	124	HYBRD ILTV	Hackenmiller	1/9/2007	5/11/2007
0008107	GEO-121-74	World Regional Geography	3.00					CBCIP	Hackenmiller	1/9/2007	5/11/2007
<b>HEALTH, SAFETY, &amp; ENVIRONMENTAL TECHNOLOGY</b>											
0008644	HSC-114-14	Medical Terminology	3.00				131	S CTR	Higgins	1/9/2007	5/11/2007

## SPIRIT LAKE CAMPUS

Please watch our WEB SITE for updates: [www.iowalakes.edu](http://www.iowalakes.edu) ◆Denoted courses appear in cumulative credit totals but do not count toward graduation requirements.

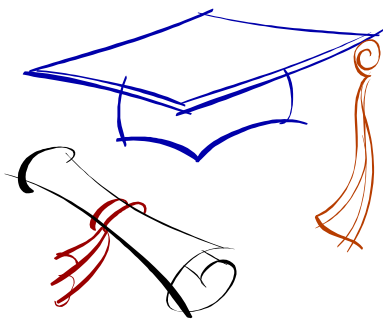
Synonym	Course/Section	Title	Credit	Start Time	End Time	Days	Room	Course types	Last Name	Start Date	End Date
<b>HISTORY</b>											

0009146	HIS-110-100	Western Civ: Ancient to Modern	3.00	04:30PM	05:55PM	T R	129		Lietz	1/9/2007	5/11/2007
0008538	HIS-111-204	Western Civ: Modern to Present	3.00	09:00AM	09:55AM	M W F	123	ILTV	Hackenmiller	1/9/2007	5/11/2007
0008660	HIS-151-14	American History to 1877	3.00				131	S CTR	Higgins	1/9/2007	5/11/2007
0008062	HIS-151-74	American History to 1877	3.00					CBCIP	Bomgaars	1/9/2007	5/11/2007
0009078	HIS-152-204	American History Since 1877	3.00	06:00PM	09:00PM	W	123	ILTV	McLaughlin	1/9/2007	5/11/2007
0008112	HIS-152-74	American History Since 1877	3.00					CBCIP	Bomgaars	1/9/2007	5/11/2007
<b>LITERATURE</b>											
0008087	LIT-101-74	Introduction to Literature	3.00					CBCIP	Devereaux	1/9/2007	5/11/2007
0008652	LIT-111-14	American Literature Since Mid-1800's	3.00				131	S CTR	Higgins	1/9/2007	5/11/2007
0008797	LIT-111-204	American Literature Since Mid-1800's	3.00	11:00AM	11:55AM	M W F	123	ILTV	Schoenewe	1/9/2007	5/11/2007
0008072	LIT-124-74	American Poetry	3.00					CBCIP	Devereaux	1/9/2007	5/11/2007
<b>MANAGEMENT</b>											
0008409	MGT-101-204	Principles of Management	3.00	11:30AM	12:55PM	T R	123	ILTV	Anderson	1/9/2007	5/11/2007
<b>MARKETING</b>											
0008556	MKT-110-204	Principles of Marketing	3.00	10:00AM	10:55AM	M W F	124	ILTV	Reimer	1/9/2007	5/11/2007
0009108	MKT-140-204	Principles of Selling	3.00	03:00PM	04:25PM	M W	123	ILTV	Reimer	1/9/2007	5/11/2007
<b>MATHEMATICS</b>											
0008653	MAT-005-14	◆Math Refresher	1.00				131	S CTR	Higgins	1/9/2007	5/11/2007
0008655	MAT-015-14	◆Metric System	1.00				131	S CTR	Higgins	1/9/2007	5/11/2007
0008654	MAT-050-14	◆Math Improvement	1.00				131	S CTR	Higgins	1/9/2007	5/11/2007
0008656	MAT-100-14	Elementary Algebra	3.00				131	S CTR	Higgins	1/9/2007	5/11/2007
0009103	MAT-101-204	Intermediate Algebra	3.00	12:30PM	01:55PM	T R	124	ILTV	Schendel	1/9/2007	5/11/2007
0009144	MAT-110-103	Math for Liberal Arts	3.00	04:00PM	05:25PM	M W	129		Keck	1/9/2007	5/11/2007
0008837	MAT-110-204	Math for Liberal Arts	3.00	08:30AM	09:55AM	T R	123	ILTV	Schendel	1/9/2007	5/11/2007
0008249	MAT-127-204	College Algebra & Trigonometry	5.00	01:00PM	01:55PM	M T W R F	123	ILTV	Kadow	1/9/2007	5/11/2007
0008849	MAT-140-204	Finite Math	3.00	04:30PM	05:55PM	M W	124	ILTV	Cuttel	1/9/2007	5/11/2007
0009087	MAT-157-204	Statistics	4.00	06:00PM	10:00PM	R	123	ILTV	Burrow	1/9/2007	5/11/2007
0008826	MAT-217-204	Calculus II	5.00	10:00AM	10:55AM	M T W R F	122	ICN	Peterson	1/9/2007	5/11/2007
<b>PHILOSOPHY</b>											
0008310	PHI-101-204	Introduction to Philosophy	3.00	12:00PM	12:55PM	M W	123	HYBRD ILTV	Dingel	1/9/2007	5/11/2007
0008092	PHI-101-74	Introduction to Philosophy	3.00					CBCIP	Dingel	1/9/2007	5/11/2007
0008077	PHI-105-74	Introduction to Ethics	3.00					CBCIP	Dingel	1/9/2007	5/11/2007
0010341	PHI-105-204	Introduction to Ethics	3.00	06:00PM	09:00PM	W	124	ILTV	Staff	1/9/2007	5/11/2007
<b>PHYSICAL EDUCATION - COACHING OFFICIATING</b>											
0008968	PEC-110-54	Coaching Ethics, Tech, & Theory	1.00	04:30PM	09:45PM	W	122	ICN	Hale	1/10/2007	1/24/2007
0008973	PEC-115-54	Athletic Development & Human Growth	1.00	04:30PM	09:45PM	W	122	ICN	Hale	2/21/2007	3/7/2007
0008978	PEC-120-54	Body Structure & Function	1.00	04:30PM	09:45PM	W	122	ICN	Hale	1/31/2007	2/14/2007
0008983	PEC-126-54	Athletic Injury Prevention	2.00	04:30PM	09:45PM	W	122	ICN	Hale	3/21/2007	4/25/2007
<b>PHYSICAL EDUCATION AND HEALTH - GENERAL</b>											
0008102	PEH-102-74	Health	3.00					CBCIP	Steele	1/9/2007	5/11/2007
<b>POLITICAL SCIENCE</b>											
0008659	POL-111-14	American National Government	3.00				131	S CTR	Higgins	1/9/2007	5/11/2007
0008046	POL-111-74	American National Government	3.00					CBCIP	Bomgaars	1/9/2007	5/11/2007
<b>PRACTICAL NURSING</b>											
0009922	PNN-101-102	Mathematics for Health Professionals	1.00	04:30PM	05:55PM	T R			Stover	1/9/2007	2/20/2007
0008662	PNN-101-14	Mathematics for Health Professionals	1.00				131	S CTR	Higgins	1/9/2007	5/11/2007
0009475	PNN-141-41	Fund of Nursing Skills Lab	4.00	06:00PM	10:00PM	T R	130		Stover	1/9/2007	5/17/2007
				08:00AM	12:00PM	S	130		Stover	1/13/2007	2/24/2007
				08:00AM	02:00PM	SU	130		Stover	2/4/2007	2/25/2007
				12:00PM	04:00PM	SU	130		Stover	1/14/2007	1/14/2007
0009476	PNN-722-41	Fund of Nursing Clinical	2.00	06:30AM	04:30PM	S SU			Stover	3/3/2007	5/13/2007
<b>PSYCHOLOGY</b>											
0008657	PSY-111-14	Introduction to Psychology	3.00				131	S CTR	Higgins	1/9/2007	5/11/2007
0008325	PSY-111-204	Introduction to Psychology	3.00	11:00AM	11:55AM	M W F	124	ILTV	Weipert	1/9/2007	5/11/2007
0009093	PSY-111-214	Introduction to Psychology	3.00	07:30AM	08:25AM	M W F	124	ILTV	Staff	1/9/2007	5/11/2007
0009118	PSY-111-224	Introduction to Psychology	3.00	06:00PM	09:00PM	T	124	ILTV	Gilbert	1/9/2007	5/11/2007
0008082	PSY-111-74	Introduction to Psychology	3.00					CBCIP	Harmon	1/9/2007	5/11/2007
0008057	PSY-223-74	Child & Adolescent Psychology	3.00					CBCIP	Davis	1/9/2007	5/11/2007
0008041	PSY-241-74	Abnormal Psychology	3.00					CBCIP	Davis	1/9/2007	5/11/2007

## SPIRIT LAKE CAMPUS

Please watch our WEB SITE for updates: [www.iowalakes.edu](http://www.iowalakes.edu) ◆Denoted courses appear in cumulative credit totals but do not count toward graduation requirements.

Synonym	Course/Section	Title	Credit	Start Time	End Time	Days	Room	Course types	Last Name	Start Date	End Date
<b>READING</b>											
0008645	RDG-030-14	◆Introduction to College Reading I	1.00				131	S CTR	Higgins	1/9/2007	5/11/2007
0008646	RDG-031-14	◆Introduction to College Reading II	1.00				131	S CTR	Higgins	1/9/2007	5/11/2007
0008651	RDG-120-14	College Reading	1.00				131	S CTR	Higgins	1/9/2007	5/11/2007
<b>SOCIOLOGY</b>											
0008658	SOC-110-14	Introduction to Sociology	3.00				131	S CTR	Higgins	1/9/2007	5/11/2007
0008117	SOC-110-74	Introduction to Sociology	3.00					CBCIP	Helmers	1/9/2006	5/11/2007
0008097	SOC-120-74	Marriage and Family	3.00					CBCIP	Helmers	1/9/2007	5/11/2007
<b>SPEECH</b>											
0009145	SPC-101-111	Fundamentals of Oral Communications	3.00	03:00PM	04:25PM	T R	130		Purdy	1/9/2007	5/11/2007
<b>STUDENT DEVELOPMENT</b>											
0009930	SDV-075-14	◆Strategies for Academic Success	1.00				108		Higgins	1/9/2007	5/11/2007
0008687	SDV-090-204	College 101	0.00	05:45PM	08:00PM	M	124		Mohni	1/8/2007	1/8/2007
0008883	SDV-103-103	*Successful Learning	1.00	08:00AM	12:30PM	T W R F	130		Gunderson	1/2/2007	1/5/2007
0008650	SDV-103-14	Successful Learning	1.00				131	S CTR	Higgins	1/9/2007	5/11/2007
		*Fast Track: 1/2, 3, 4, 5									



**What are your plans or goals?  
Is C **OLLEGE** in your future?  
We could help - check us out at  
[www.iowalakes.edu](http://www.iowalakes.edu)**

**Completion of the Associate in Arts degree makes transfer to the Iowa Regents' colleges (the University of Iowa, Iowa State University and the University of Northern Iowa) easier. Your Iowa Lakes advisor assists you in planning the courses.**

- ◆Transfer as a junior having met your freshman-sophomore requirements.
- ◆After transfer complete the last two years of your bachelor's degree.
- ◆Similar transfer agreements exist with private colleges and universities in Iowa and surrounding states.
- ◆Working directly with your transfer college ensures that you take the courses you need, both for freshman-sophomore requirements and for your major requirements and prerequisites.







